



# STAKEHOLDER UPDATE

## ITB Rooftop Solar – ITB MLCP Electrical Outage

Update 15: September 2024 v2

### BACKGROUND

In line with our commitment to sustainability at BAC, we would like to inform you that we are currently undertaking a project to enhance our solar energy infrastructure. This initiative involves the installation of additional solar panels in three key locations within the international terminal.

Preparatory work for the project commenced on September 28, 2023. The project will specifically focus on the following areas:

- International Terminal Building Multi-level Car Park (ITB MLCP)
- International Terminal Building Northern Concourse and Extension (ITB NCC and NCX) **COMPLETE**
- International Terminal Building Southern Concourse (ITB SCC) **COMPLETE**

### UPCOMING WORKS

**HV Sub658 replacement work will commence on Monday, 23<sup>rd</sup> September 2024 for 4-5 weeks.**

The generator is to be delivered to the site and set up in the HV compound on Monday, 23.09.24.

**A shutdown is planned for Tuesday, 24<sup>th</sup> September 2024** to disconnect Sub658 where the Main DB will be disconnected and switched to a temporary DB supplied by the generator and the HV feed to Sub658 will be disconnected. A communications board will be installed adjacent to the temporary DB for the Sewage Treatment Pump system.

BAC will provide resources to assist with the Sewage Treatment Pump setup post-shutdown to confirm normal operation.

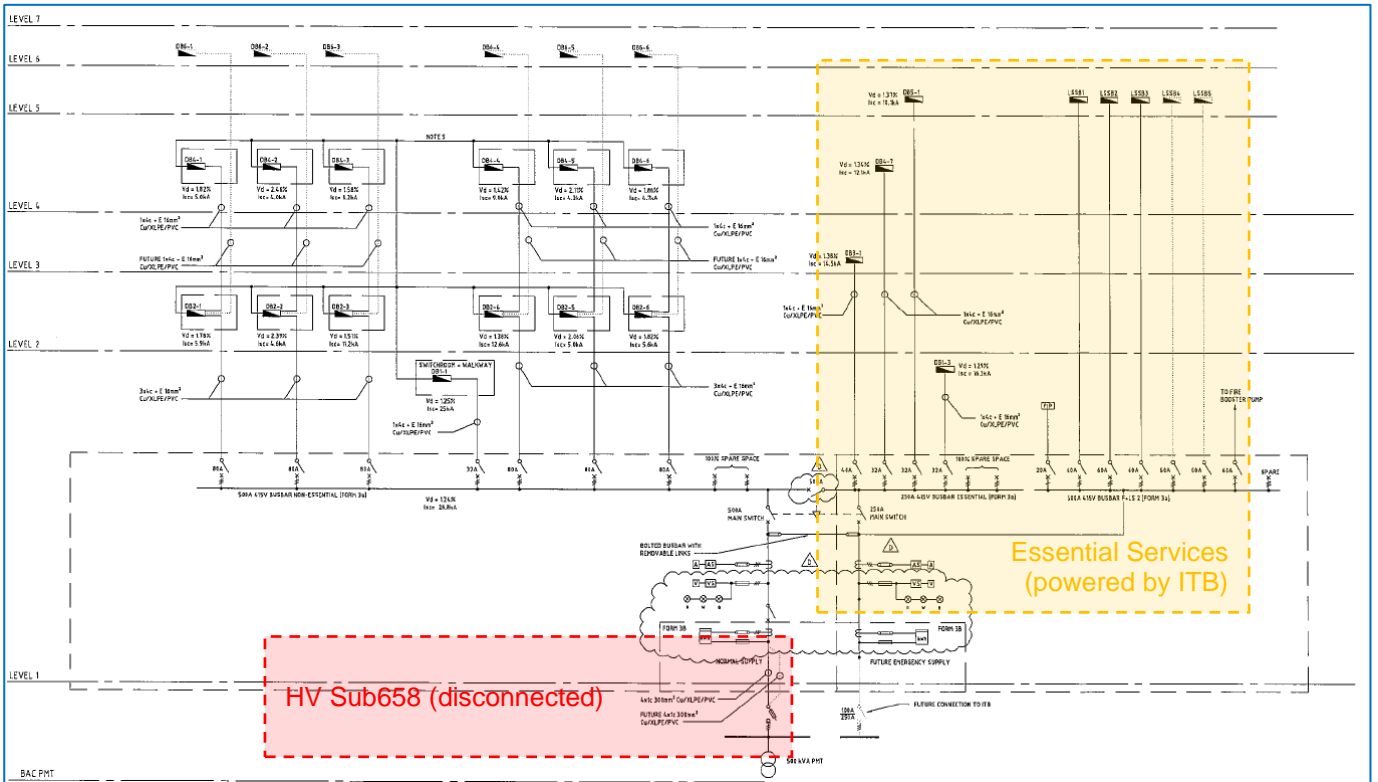
### IMPACTS

The car park will lose power to the **non-essential** electrical DBs during the LV shutdown for a short period on **Tuesday, 24<sup>th</sup> September 2024 from 2:00 AM to 3:30 AM**. However, all essential services will be automatically switched to the ITB via the relay when the Sub658 feeder cable is disconnected.

See Figure 1. The power to the non-essential electrical DBs will be restored from 3:30 AM.

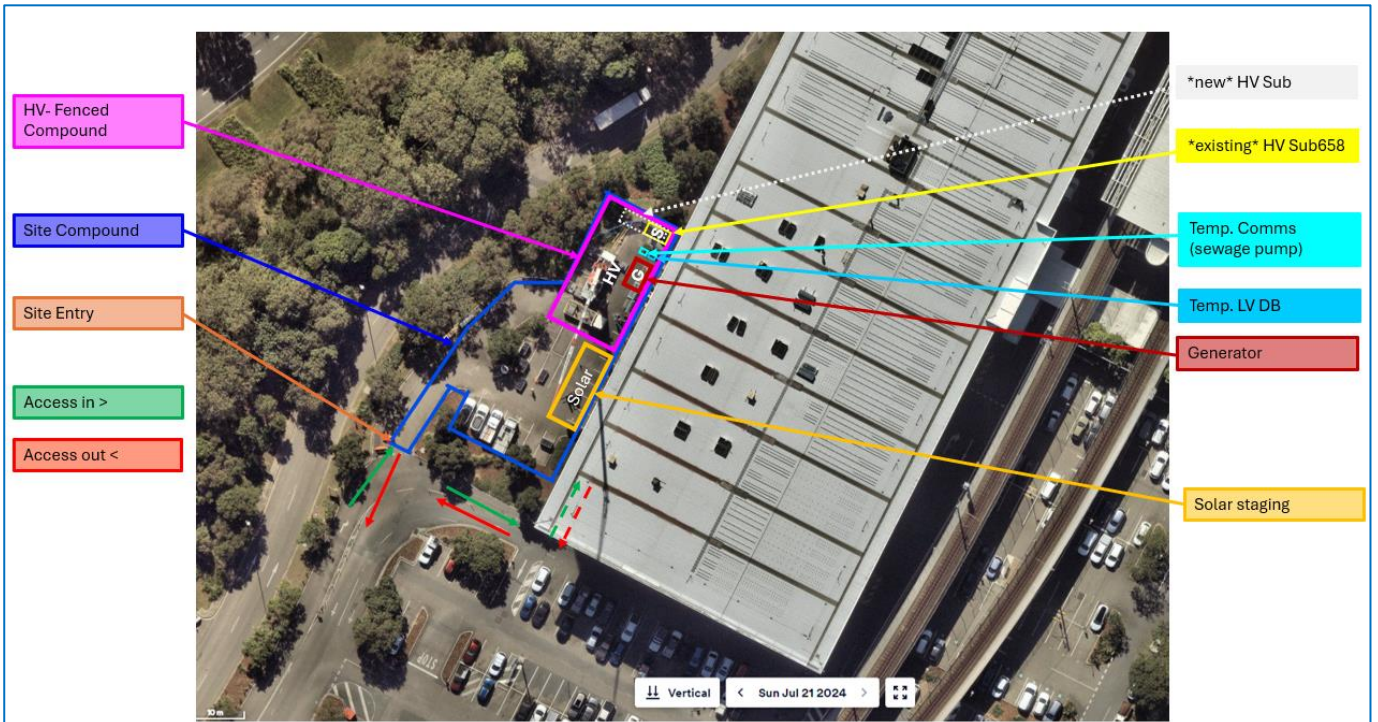
Temporary loss of power to the Sewage Treatment Pump system.

Figure 1 – Extract SLD (from drawing CWG050071E05E002.pdf)



Essential Services powered by the ITB (orange box) and Sub658 disconnected (red box).

Figure 2 – Site Plan and Aerial of MLCP – Not all compound items shown for clarity





## PROJECT CONTACTS

### **BAC Senior Project Manager**

Andrew Lawrence  
Mob 0432 604 840  
Email [Andrew.Lawrence@bne.com.au](mailto:Andrew.Lawrence@bne.com.au)

**Airport Duty Manager contactable 24/7, 07 3406 3171**