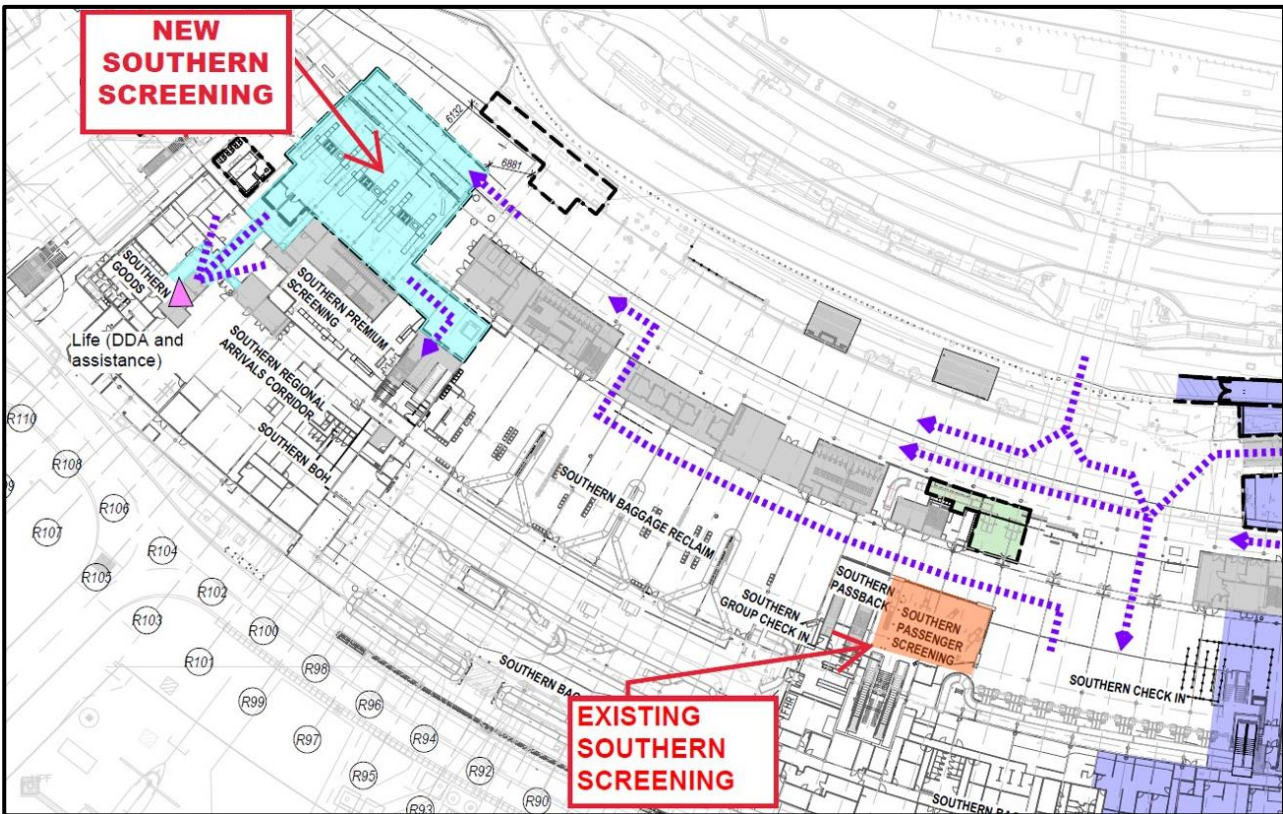


# STAKEHOLDER NOTICE

## DTB SUP - Southern Security Screening relocation

D90 Stakeholder Notice: September 2024



## BACKGROUND

As part of the DTB Security Upgrade Project, changes to the Terminal Screening points are being undertaken to facilitate the construction of the new Mezzanine.

The first change to security screening will be the transition of security screening for all southern check in hall airlines from the existing central and southern screening points to the new southern screening point from **Tuesday 1 October 2024**.

## IMPACT

Passenger security screening at the southern end of the terminal will be transitioned to the new security screening point located at the southernmost end of the terminal with a new 'up' escalator (previously the southernmost pass back exit). The new Southern Security Screening is only accessible via the forecourt.

Virgin Australia Premium Lounge Entry Screening Point will be decommissioned the day prior to the new Southern Security Screening Point opening. The PLE will be maintained as a premium access point for

### For more information:

Mohaned El Gubi, Project Manager on email: [Mohaned.elgubbi@bne.com.au](mailto:Mohaned.elgubbi@bne.com.au)  
[www.bne.com.au/projects](http://www.bne.com.au/projects)

Virgin Australia in line with normal operating hours – access to the PLE will be after passengers have been processed through the new screening point, via a priority pathway.

All passengers checking in in the southern check in hall (refer Stakeholder Notice #86) will now have a new travel path to the security screening point, as identified in the map below.

PRM will be guided through the screening point with DDA access to level 2 via the recommissioned southern goods lift, with staff facilitated through a staff priority lane.

Wayfinding will be updated overnight Monday 30 September to support these changes and the new passenger journey. Terminal Support Officer's will maintain their ongoing presence to support peak periods and BAC will provide additional Terminal Support Officer's during the transition period along the new passenger journey path.

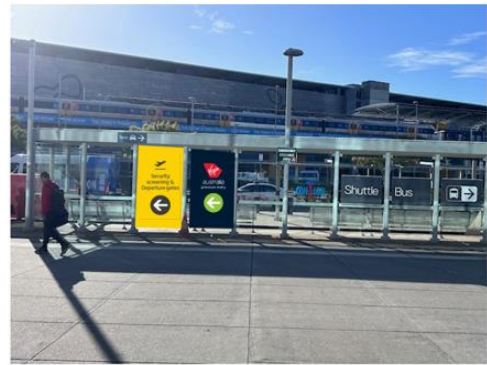
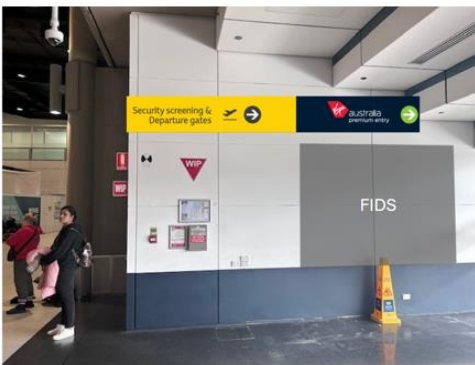
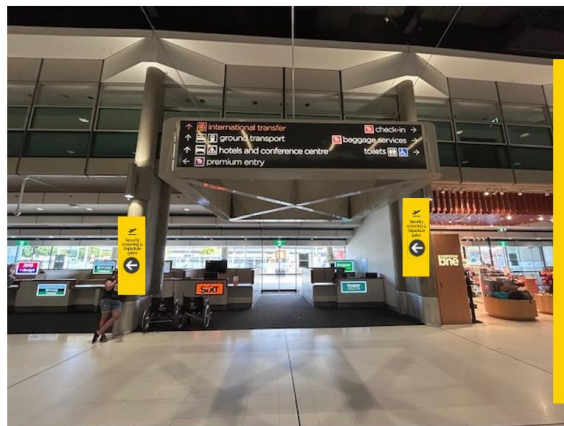
## TIME

**Existing Southern Screening** (orange below) point will cease operate on **2045 Monday 30 September**

**New Southern Screening** (Blue below) point will commence operations from **0400 Tuesday 1 October**, including the new escalator.

Virgin Australia PLE Screening point will be decommissioned at 10am Monday 30 September and will change from a secure screening zone to a sterile environment.

## PASSENGER JOURNEY FROM CHECK IN TO SCREENING



### For more information:

Mohaned ElGubbi, Project Manager on email: [Mohaned.elgubbi@bne.com.au](mailto:Mohaned.elgubbi@bne.com.au)  
[www.bne.com.au/projects](http://www.bne.com.au/projects)

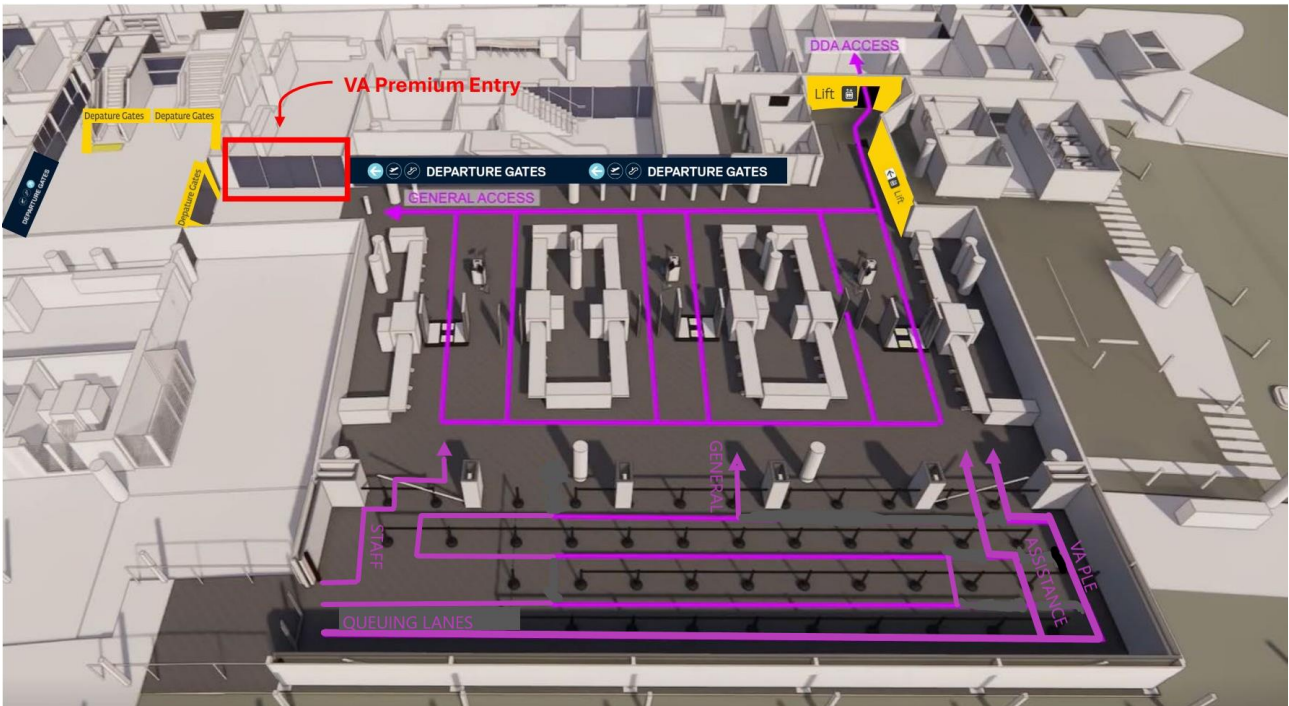
# PASSENGER JOURNEY FROM CHECK IN TO SCREENING CONT.



Floor decals



# SECURITY SCREENING QUEUE LAYOUT



**For more information:**

Mohaned ElGubbi, Project Manager on email: [Mohaned.elgubbi@bne.com.au](mailto:Mohaned.elgubbi@bne.com.au)  
[www.bne.com.au/projects](http://www.bne.com.au/projects)