



STAKEHOLDER NOTICE

Aeromedical Precinct Site Accommodation

GA2 Stakeholder Notice: November-December 2024

BACKGROUND

Brisbane Airport Corporation (BAC) is progressing with the development of the Aeromedical Precinct, designed to enhance medical transport services for Queensland and beyond. Once completed, the precinct will house the RFDS, LifeFlight, RSQ, and QG Air, connecting regional and remote communities with Brisbane's medical services. [Overview of Works](#)

Site accommodation establishment works will commence from Tuesday, 3rd December to Friday, 20th December 2024. Activities will comprise the creation of a site compound at the corner of Diamond Road and Casuarina Drive, featuring:

- Contractor lunch facilities,
- Amenities,
- Project offices,
- First Aid Facilities.

IMPACT & MANAGEMENT

Working hours:
6:30am-4:30pm

Works date:
3/12/24 – 20/12/24

Impacts:

BAC will implement the following necessary closures and modifications to ensure smooth progression:

- Permanent relocation of RFDS parking facilities to nearby agreed location,
- Updated RFDS Fire Egress location and Emergency Plan.

Note: All works are weather-dependent and work dates maybe subject to changes.

For more details, refer to the attached documents. Thank you for your cooperation as we advance this critical project.

For more information:

Emmanuel Materu, BAC Senior Project Manager on email:
Emmanuel.materu@bne.com.au

Project CONTACTS

ADCO Site Manager:

Gary Challis

Mobile: 0434 986 880

Email: gchallis@adcoconstruct.com.au

BAC Senior Project Manager:

Emmanuel Materu

Mobile: 0423 413 822

Email: Emmanuel.Materu@bne.com.au

ADCO HSE Advisor:

Dan Cleverley

Mobile: 0476 776 028

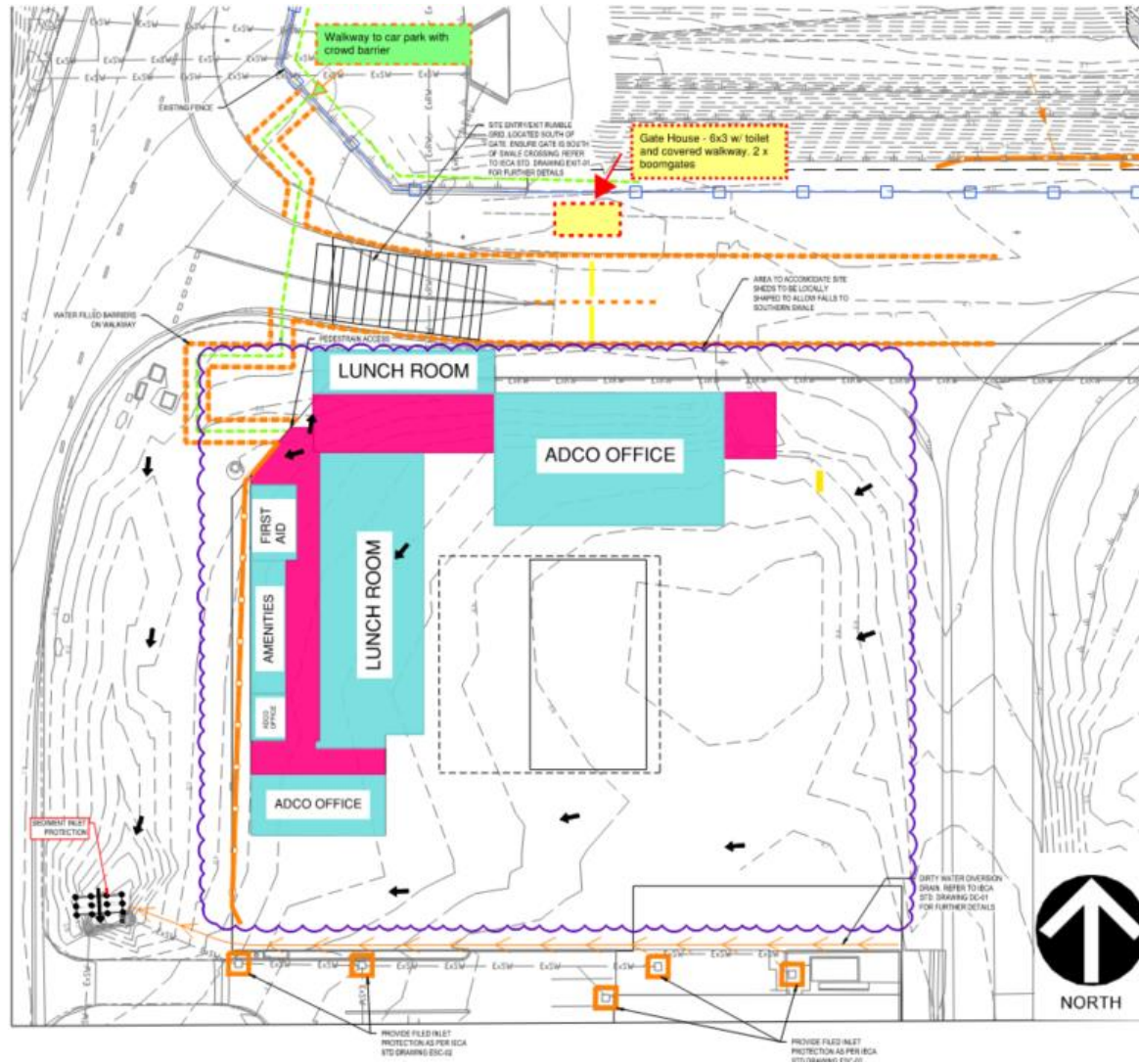
Email: dcleverley@adcoconstruct.com.au

Airport Duty Manager contactable 24/7, 07 3406 3171

For more information:

Emmanuel Materu, BAC Senior Project Manager on email:
Emmanuel.materu@bne.com.au

Proposed Plan Layout



For more information:

Emmanuel Materu, BAC Senior Project Manager on email:
Emmanuel.materu@bne.com.au