

STAKEHOLDER UPDATE

DTB P1 Carpark Concrete Ramps Refurbishment

Update 01: 21 January 2025

OVERVIEW

BAC will be undertaking refurbishment works on the Domestic Terminal P1 carpark concrete ramps between Levels 7, 8 & 9 and two exit ramps and one entry ramp at level 2.

SCHEDULE OF WORKS

Location

Domestic Terminal P1 carpark level 2, 8 & 9 concrete ramps as shown in site location plan in figure-1.

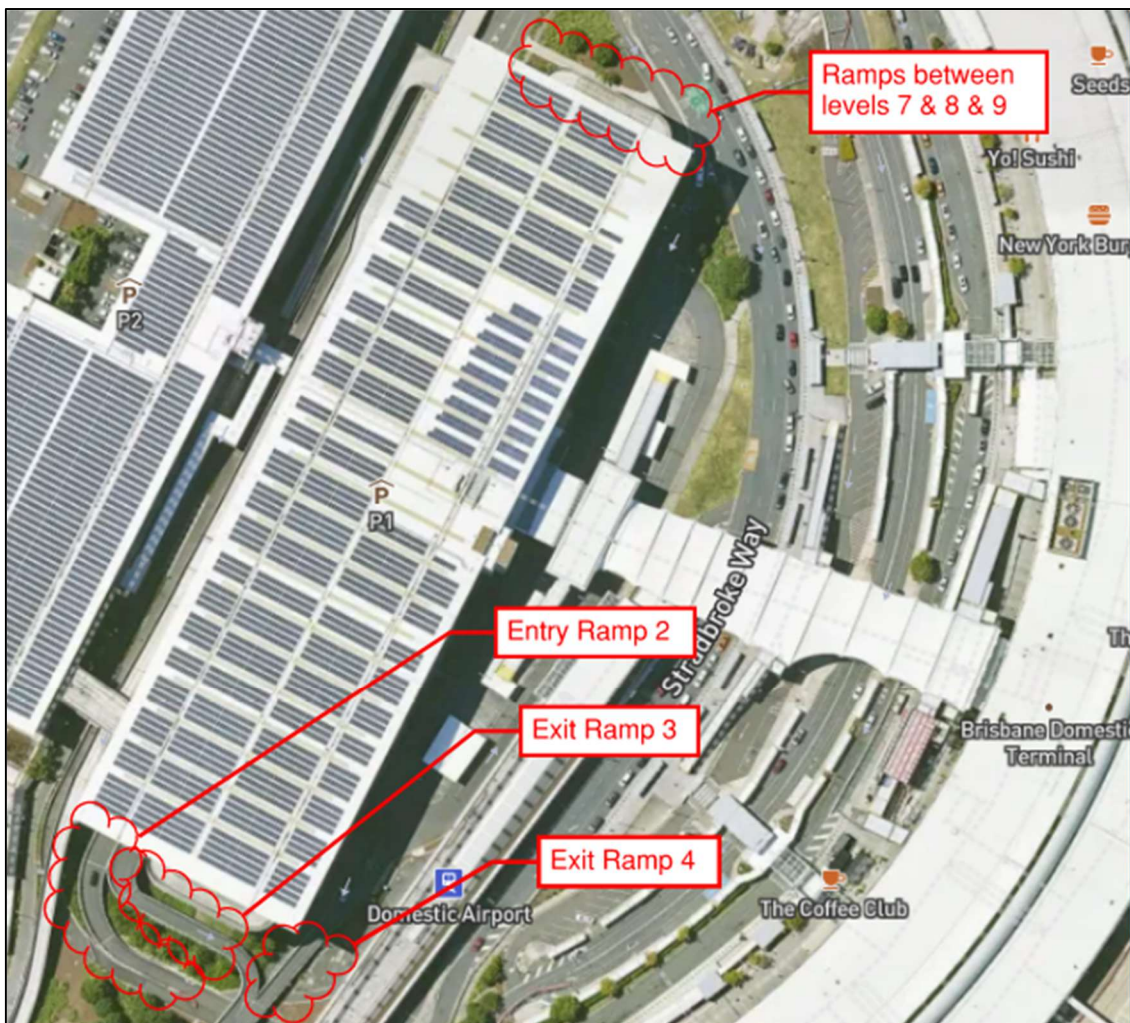


Figure 1: Site Location - Plan



Dates

Works are scheduled to start on **Thursday 6th Feb 2025** and conclude **Friday 4th April 2025**.

Shift Times

All works will be conducted daytime, commencing **7:00AM until 5:00PM**. However, the following schedule will be maintained during overnight if required ramp closure.

- Entry ramp 2 working time restrictions for closure, doing the works from **10:00 PM ~ 10:00 AM**.
- Exit ramp 3 working time restrictions for closure from, doing the works **1:00 AM ~7:00 AM**.
- Exit ramp 4 working time restrictions for closure, doing the works from **1:00 AM ~3:00 AM**.
- Ramp between levels 7 & 8 will be full closure until completion.
- Ramp between levels 8 & 9 will be full closure until completion.

See below detailed working schedule.

		Month - February 2025																											
Location	Task	2	3	4	5	6	7	8	9	10	11	12	13	14	15	16	17	18	19	20	21	22	23	24	25	26	27	28	
		S	M	T	W	T	F	S	S	M	T	W	T	F	S	S	M	T	W	T	F	S	S	M	T	W	T	F	
Site mob	Deliveries																												
	Erect fencing																												
	Erect Signage																												
	Safety talks / Tool box																												
Ramp 7 to 8	Safety talks / Tool box																												
	Install TGS																												
	Crak injection to soffit																												
Ramp 8 to 9	Safety talks / Tool box																												
	Install TGS																												
	Joint repair																												
	Water blast																												
	Drain resetting																												
	Spalling concrete repairs																												
	Remove drummy screed																												
	Paveroc																												
	Paint kurb																												
	Touch ups/ cleaning																												

		Month - February 2025														Month - March 2025													
Location	Task	22	23	24	25	26	27	28	1	2	3	4	5	6	7	8	9	10	11	12	13	14	15	16	17	18	19		
		S	S	M	T	W	T	F	S	S	M	T	W	T	F	S	S	M	T	W	T	F	S	S	M	T	W		
Entry ramp 2	Safety talks / Tool box																												
	Install TGS																												
	Joint cleaning / cutting																												
	Water blast																												
	Line marking																												
	Cover plate tightening																												
	Foam removal																												
	Repairs to cracked pads																												
	Remove tree																												
	Touch ups/ cleaning																												
Exit ramp 3	Safety talks / Tool box																												
	Install TGS																												
	Repair to pourable joint																												
	Crack sealing to top side joint																												
	Replace nut & washer																												
	Kurb side crack repairs																												
	Traverse crack repairs																												
	Pressure wash barriers																												
	Touch ups/ cleaning																												

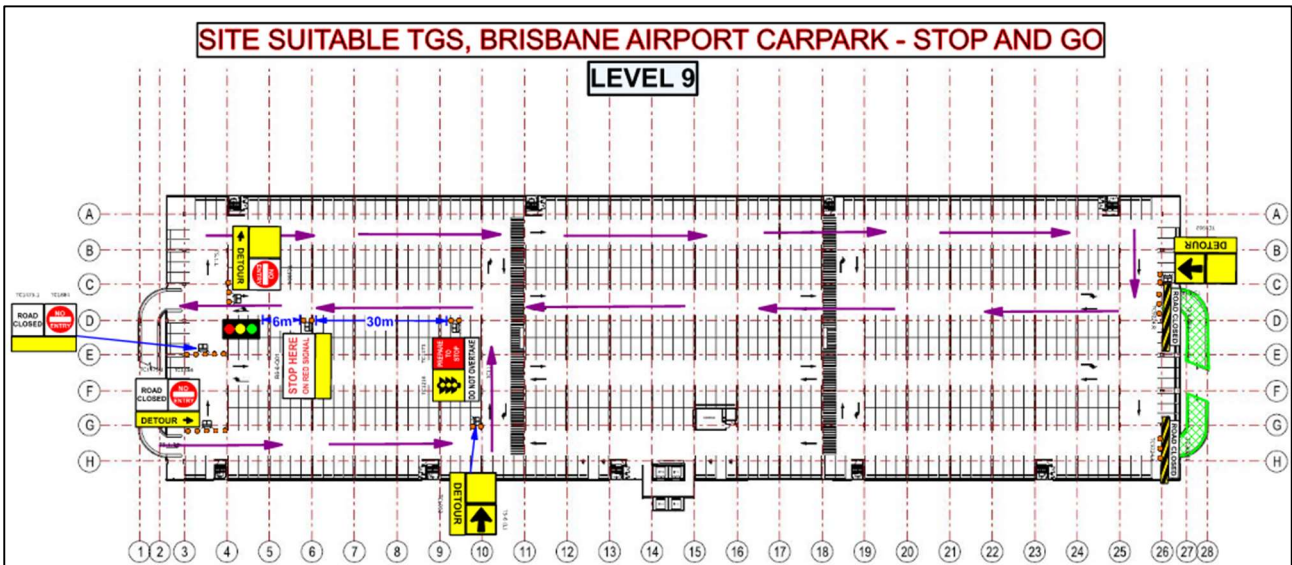


Figure 4: Traffic Management for Level 9 - P1 Carpark

Entry Ramp 2

The concrete entry ramp 2 will be closed temporarily during construction as per the work schedule the traffic will be directed as shown below as per TGS.

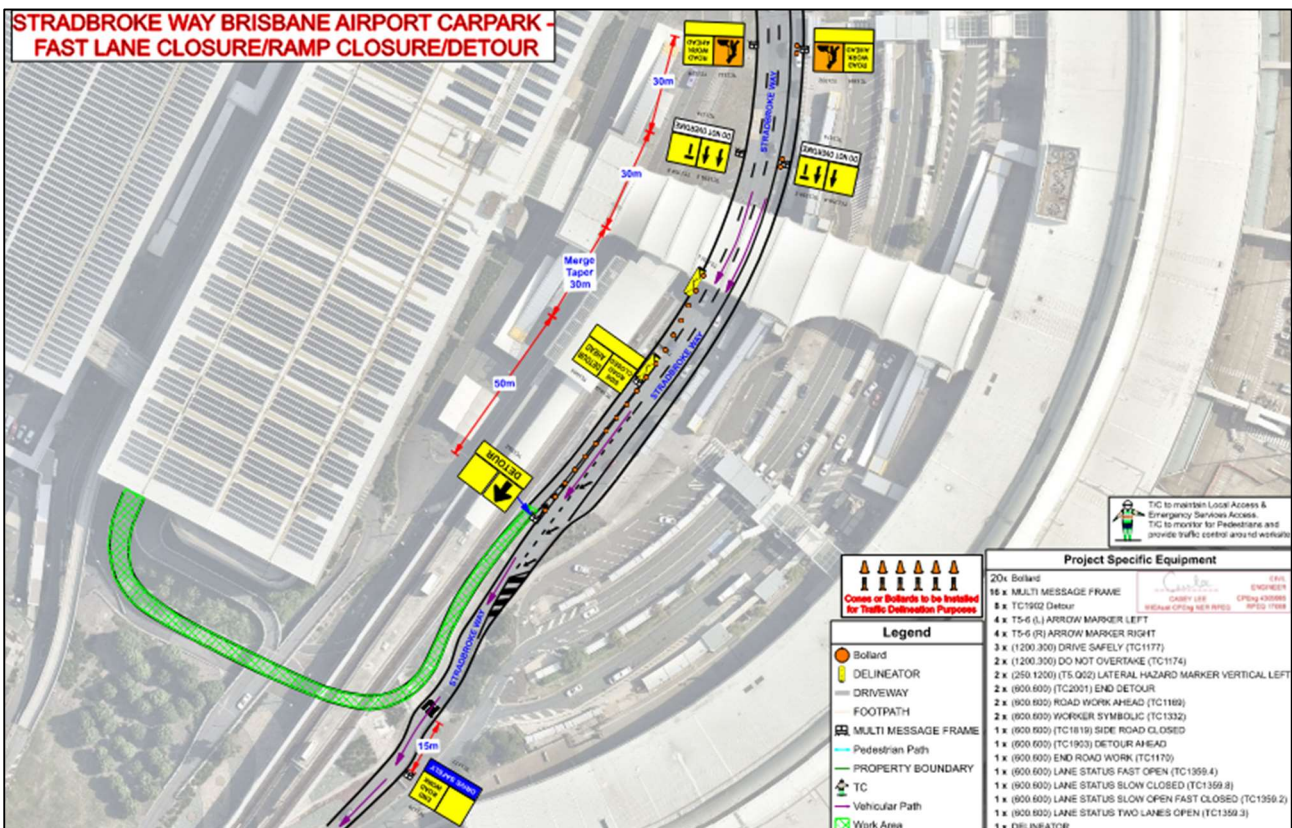


Figure 5: Traffic Management for any Closure - Entry Ramp 2 - P1 Carpark

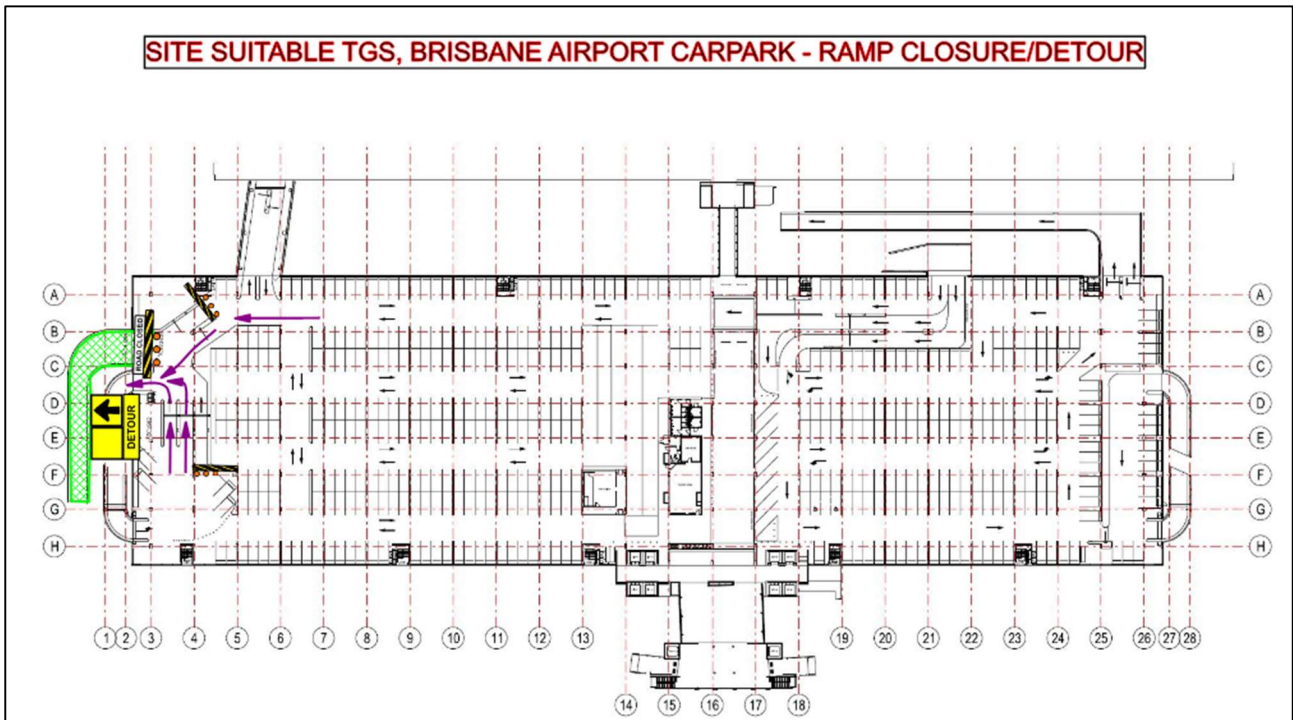


Figure 6: Traffic Management for any Closure – Exit Ramp 3 – P1 Carpark

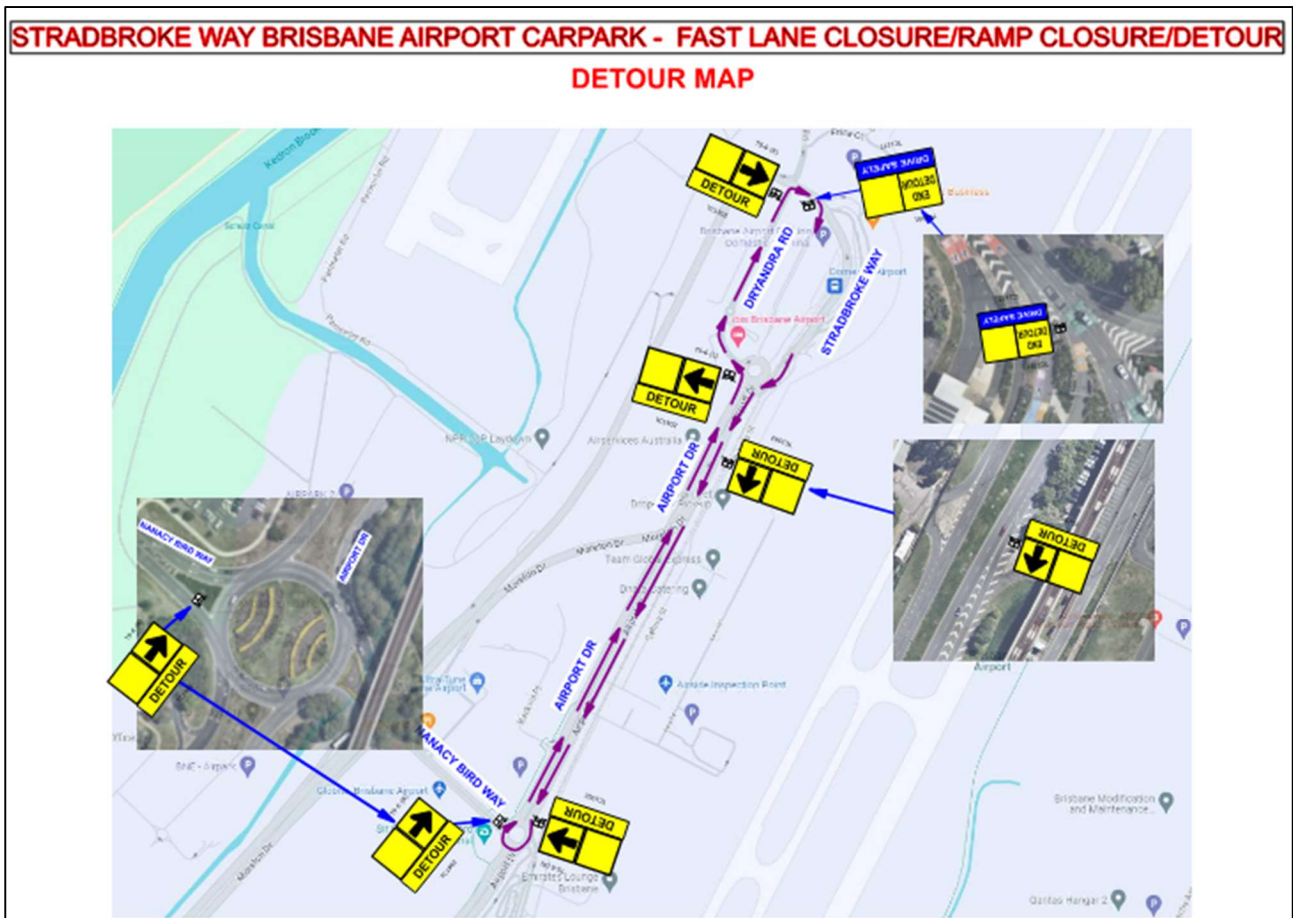


Figure 7: Traffic Management for any Closure - Exit Ramp 4 - P1 Carpark



FURTHER INFORMATION

Should you require any further information, please contact Ahmed Atef – Capital Works Project Manager via email: ahmed.atef@bne.com.au