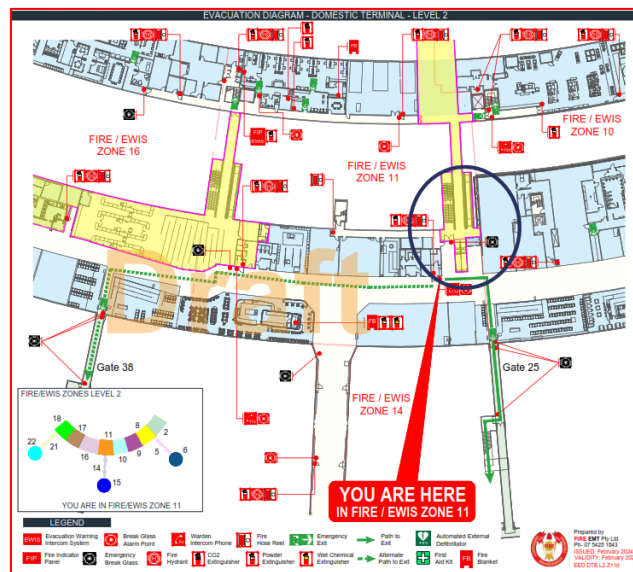


SAFETY NOTICE 17 DOMESTIC TERMINAL SECURITY UPGRADE PROJECT (DTBSUP)

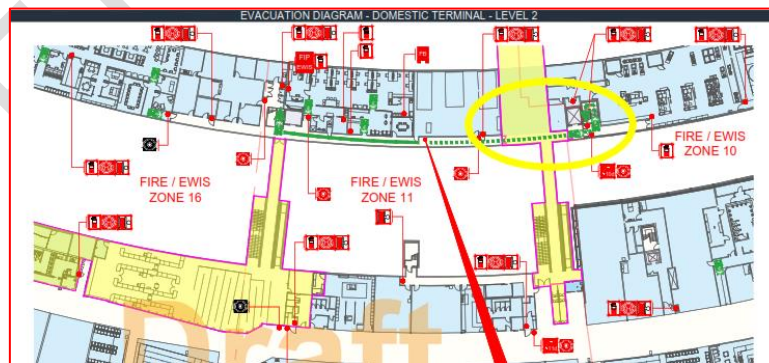
The following essential information must be passed to all Wardens and staff by tenants who must make themselves aware of these changes.

Central Passback Closure

- As of 17th February 2025, the central passback (blue circle below) has been closed, as per [BAC Stakeholder Notice D156](#), this effects two emergency egress routes. From Airside, emergency egress is not available to level 1 via the passback, alternate emergency routes are along the concourses north or south or via gates 25 & 38.



- The corridor from the BAC office landside leading north to the lift will also be closed, **emergency egress only** will still be available in this direction via push open doors into and out of the construction area (yellow circle below) then down the stairwell to Level 1. Lendlease are to ensure a clear path is always maintained between these doors within the construction area.



- Local [Evacuation Diagrams](#) have been amended, Wardens and all staff are to familiarise themselves with these changes.

Please contact me if you have any questions regarding this.

Regards

Garry Dawson (GiFireE) BAC Fire Safety Advisor

Tel: 07 5428 1843 Ext 4 Email: garry.dawson@fireemt.com.au