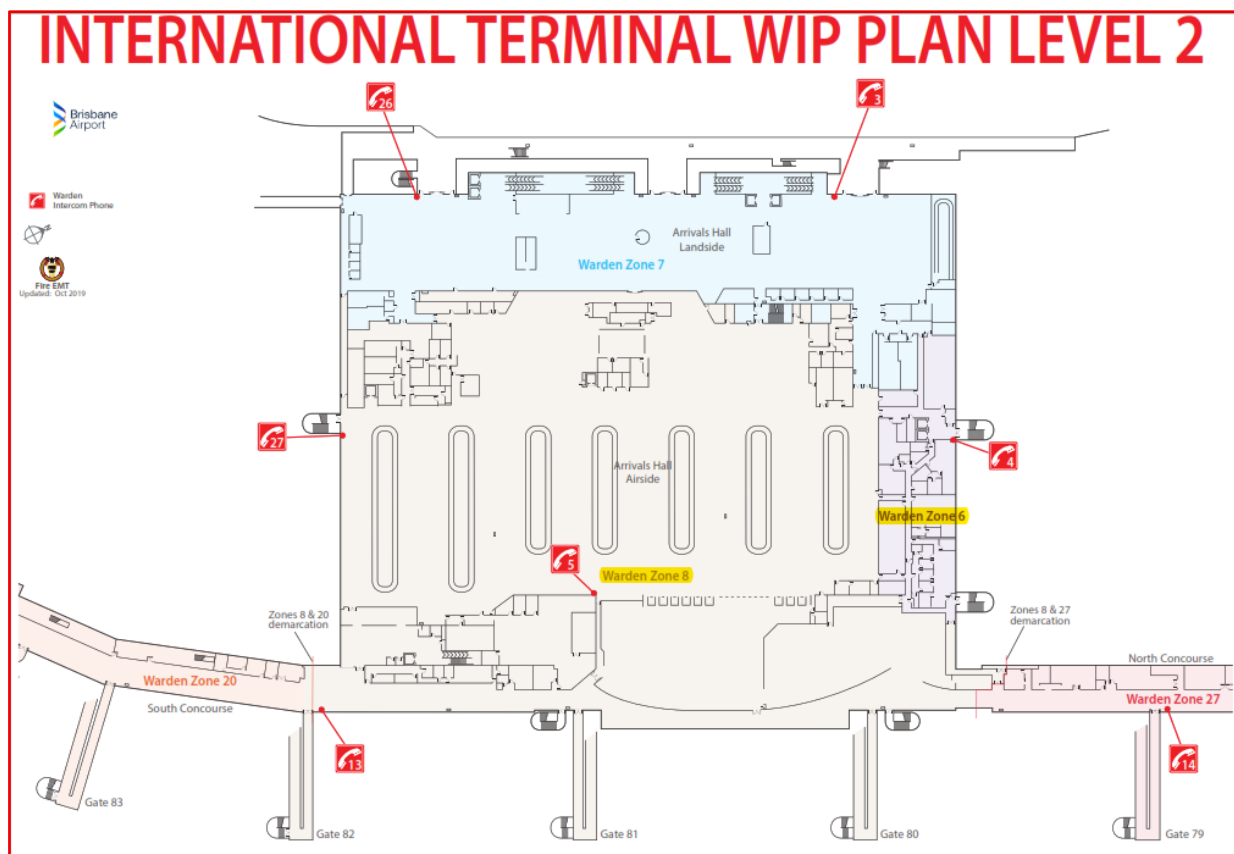


SAFETY NOTICE 1

ITB DUTY-FREE EXPANSION & ENTRY CONTROL POINT PROJECT

As part of the International Terminal Duty Free Expansion & Entry Control Point Project, it will be necessary through various stages of the project to complete works effecting emergency egress routes and warden intercommunication equipment in Zones 6 & 8, Level 2 / Emergency Warning and Intercommunication System (EWIS) Zones.



The following essential information should be passed to all Wardens and staff by tenants who must make themselves aware of these changes.

Amended emergency egress route in Zone 8 Primary Line southern egress

In line with [14JUL - Stakeholder Notice - ECP Project Commencement](#)

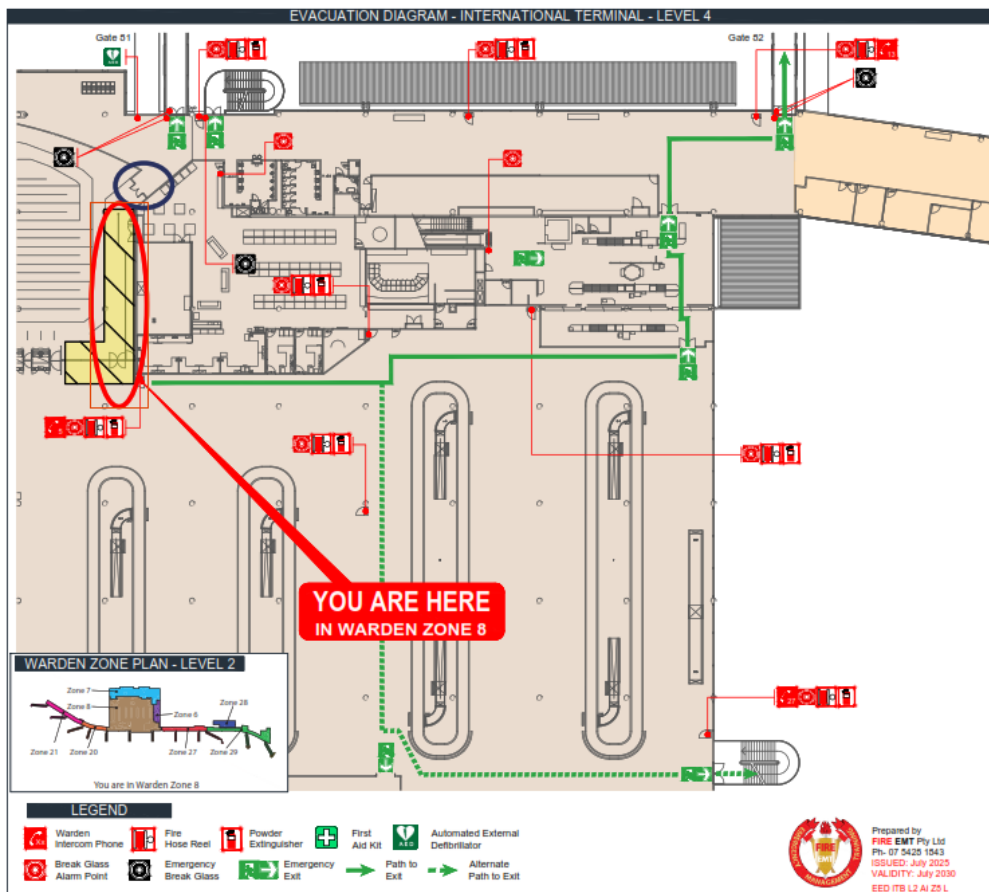
- Relocation and installation of two Primary Line Modules (PLMs)
- Consolidation of the buggy/staff gate on the south side of the ECP Hall
- Relocation and installation of the glass balustrades
- Associated minor works and compliance/service adjustments

Effective immediately till approx. 31st July 2025



FIRE EMT Emergency Management Training

1. Hoarding works (yellow hatched area below) at the buggy/staff gate on the south side of the ECP hall will close an emergency egress route from baggage reclaim to the concourse and airside emergency egresses.
2. The egress route that previously ran along the yellow hatched area indicated by the red circle located next to the warden intercom phone (WIP 5) will be inaccessible during the works.
3. Evacuees exiting from this area in an emergency will have to exit through the transit screening area to the south (as indicated below by the solid green line) or the secondary emergency egress route via the external staircase by oversized baggage at WIP 27 (as indicated below by the dotted green line)
4. The double exit door from the Primary Lines (blue circle) will still be available for occupants in the immigration line to evacuate to the concourse and use the emergency egresses to Airside.



All affected evacuation diagrams have been amended to show the changes to the emergency egress route.

Tenants need to familiarise themselves with these changes and ensure all staff are aware of them.

Please contact me via email with any questions regarding these changes throughout the project.

Garry Dawson (GIFireE)
BAC Fire Safety Advisor
Mob: 07 5428 1843 Ext 4
Email: garry.dawson@fireemt.com.au