

# Stakeholder Notice

## International Terminal Security Retail Upgrade Project | Level 1 BMA Staff Screening Works

STK-N I-95  
Date 8 August 2025



The International Terminal Security Retail Upgrade Project (ITB SRUP) includes upgrading the Level 1 BMA Staff Screening Point.

### Scope of Works

- Construction zone barricaded within the room to undertake builder's work (by Campak)
- 920 CT Delivery and installation (by Rapiscan) from 11 August 2025
- New equipment operational in September

### Impacts

Type of works	Date Range	Time	Impacts
Level 1 BMA Screening Upgrade Works	21/07/25 – 19/09/25	Day works	Screening point remains operational. Construction and new equipment installation and commissioning work within barricaded construction zone
Rapiscan Delivery	11/08/25 – 14/08/25	1100 -1600	Staged delivery through loading dock and tunnel. Unloading from 11am to minimise impact to retail deliveries. Using some space at the tunnel to stage the work and unpack the equipment.  <b>Potential delay/queuing in BMA staff screening – Staff please use MSSP on 11/8 and 12/8 1100 - 1600, where practical and where you are not carrying liquid food items.</b>  See Figure 2
Forecast "Go Live"	19/09/25		

**Note:** During delivery (11-12<sup>th</sup> August between 1100-1600) it is recommended that Ramp teams and staff use Main screening on level 3 as primary screening. Liquids for lunch will not be accepted through this screening point. Should staff choose to bring liquids for lunch, BMA screening will remain open, however please expect delays in processing, earlier shift arrival is recommended to account for potential BMA screening delays.

## Location

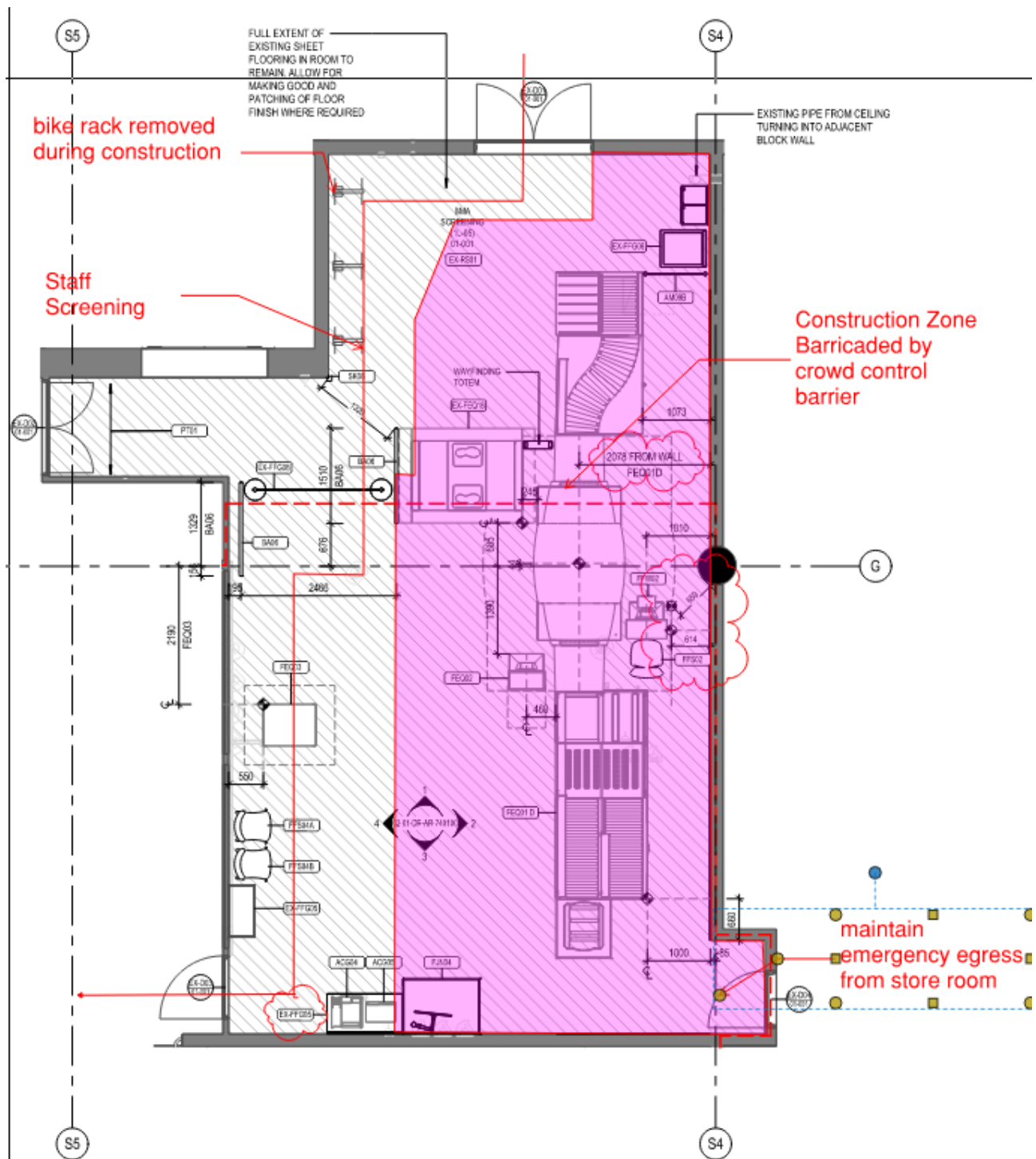


Figure 1 – Level 1 BMA Staff Screening Path



