



FIRE EMT

Emergency Management Training



SAFETY NOTICE 11

INTERNATIONAL TERMINAL SECURITY RETAIL UPGRADE PROJECT (ITB SRUP)

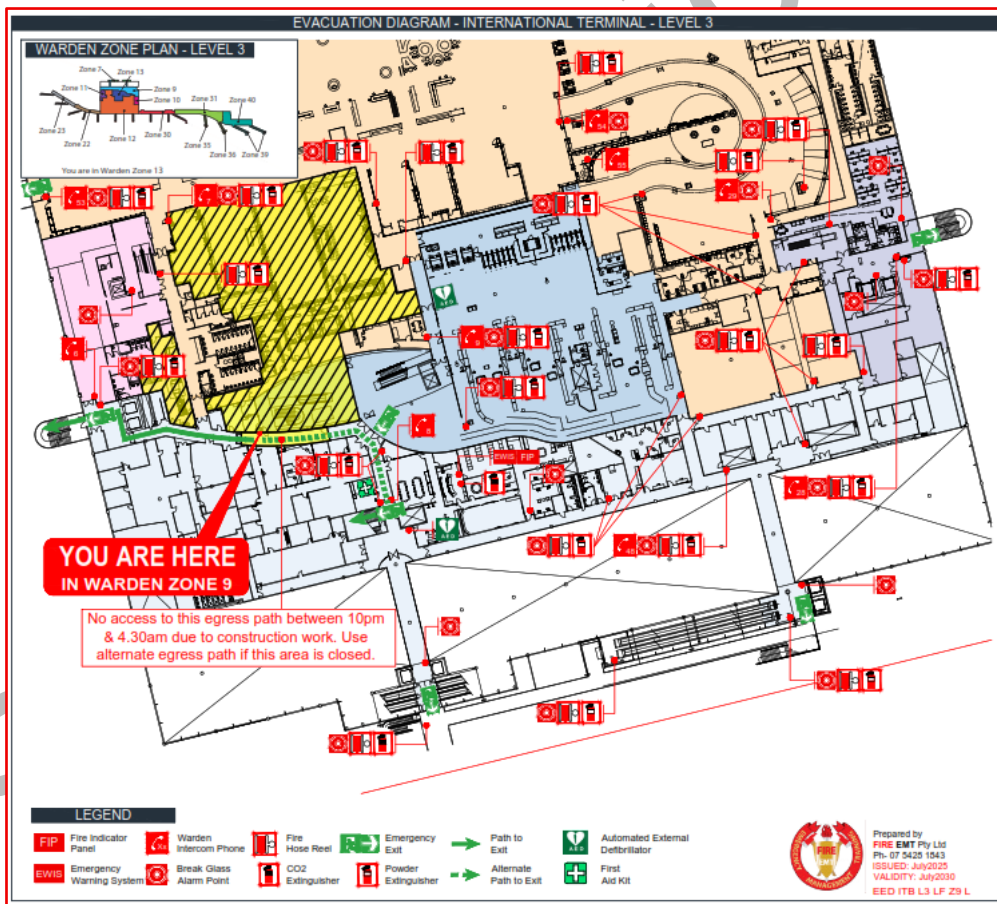
The following essential information is to be passed to all ITB tenants and stakeholders who must make themselves aware of these special emergency egress route procedures during the corridor closure period associated with this works.

In line with [12AUG25 Stakeholder Notice - ITB SRUP L3 Staff Corridor Works](#)

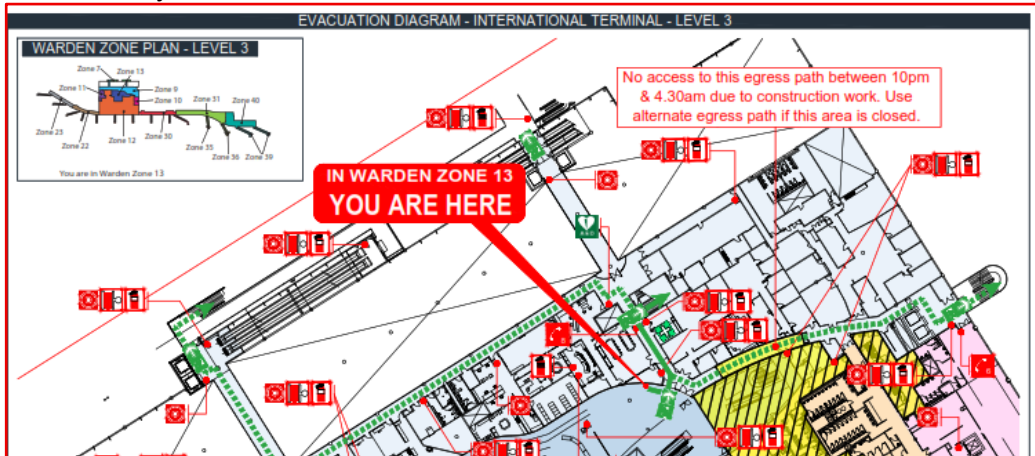
This works has the following effect on emergency egress along this corridor.

The emergency egress route along the corridor will be closed Sunday to Thursday Evenings between 2200 – 0430hrs.

During this time any evacuation of the following areas will need to use alternate posted emergency egress routes, evacuation diagrams in the immediate area have been amended to show this as per the sample below.

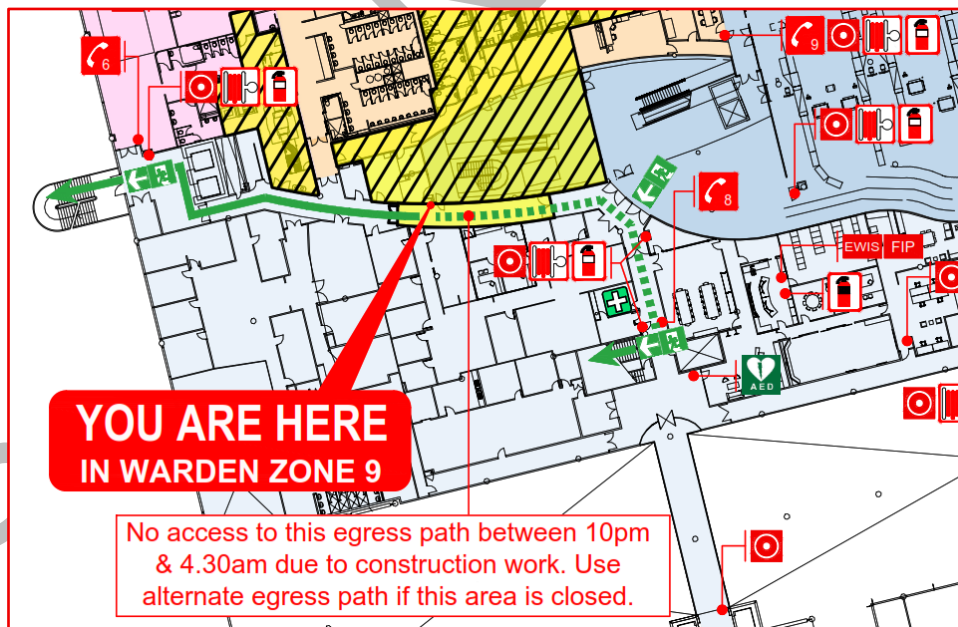


Occupants evacuating from the Outward Screening Point (OCP) or offices south of the corridor, closure will need to evacuate as a primary route via the internal fire stairs to the service tunnel and onto Assembly Area B1 outside Port Villa. The secondary route will take them along the back of house corridor to the southern bridge, across to the southern lifts, through the external doors and down to Assembly Area A2 on Level 2.



Occupants evacuating North of the corridor closure will need to evacuate via the external emergency staircase opposite the Level 3 good lift lobby to Assembly Area B1.

Qantas staff in Qantas offices can also evacuate via the emergency exit at the rear of their office that exits into the back of house corridor opposite the BAC level 3 reception, from there evacuees can use the internal fire stairs to the service tunnel to Assembly Area B1 or via the southern bridge route to Assembly Area A2.



Please contact me via email with any questions regarding these changes throughout the project.

Garry Dawson (GiFireE) BAC Fire Safety Advisor
Mob: 07 5428 1843 Ext 4
Email: garry.dawson@fireemt.com.au