



FIRE EMT

Emergency Management Training



SAFETY NOTICE 12

**INTERNATIONAL TERMINAL SECURITY RETAIL UPGRADE PROJECT
(ITB SRUP)**

The following essential information is to be passed to all ITB tenants and stakeholders who must make themselves aware of these special emergency egress route procedures during the corridor closure period associated with this works.

In line with BAC Stakeholder Notice: [I-108 SRUP STK-N79 Level 4 Southern Corridor opening](#)

This change has the following effect on emergency egress in the Southern area of Level 4 especially along this corridor.

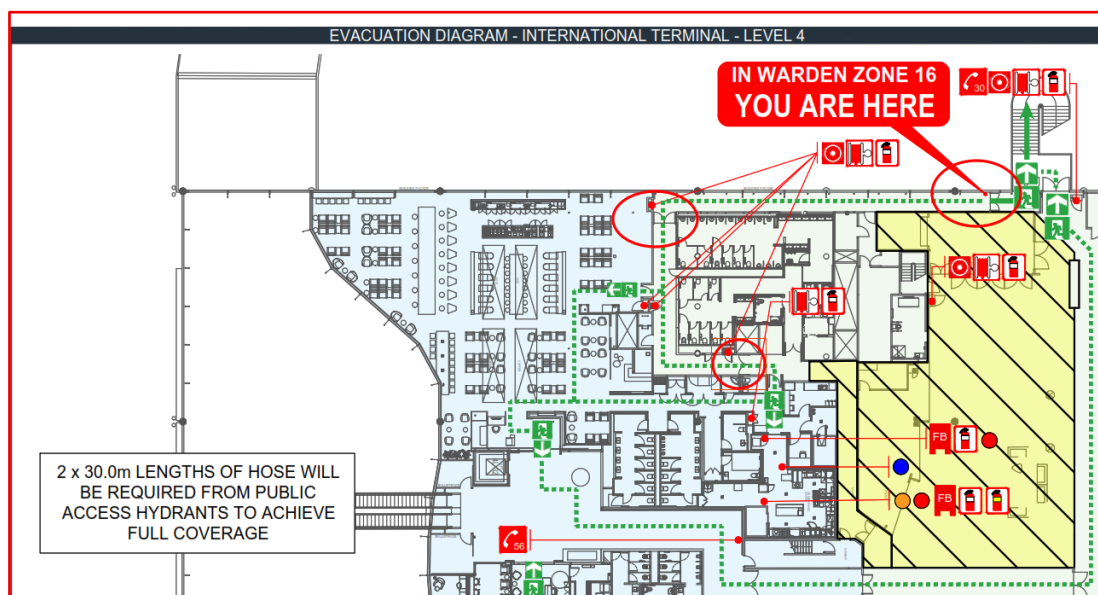
The Level 4 southern toilet corridor access and egress has changed affecting emergency egress routes.

The existing corridor entered from the check in row 9-10 area will close from the current entry point to the southern toilets and become part of the Lendlease construction zone.

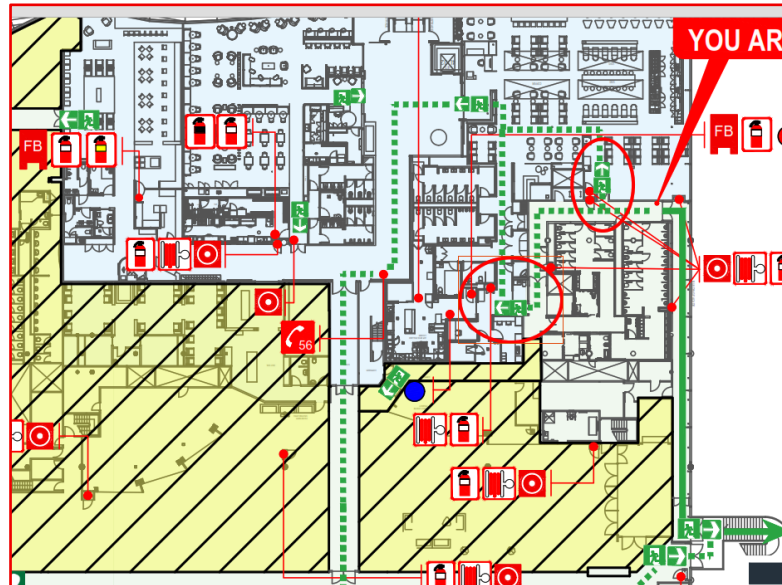
The new access corridor to the Level 4 toilets will open and also serves as an emergency egress from the southern toilet area and the Level 4 southern lounges.

All staff and wardens in this area are to familiarise themselves with the following changes.

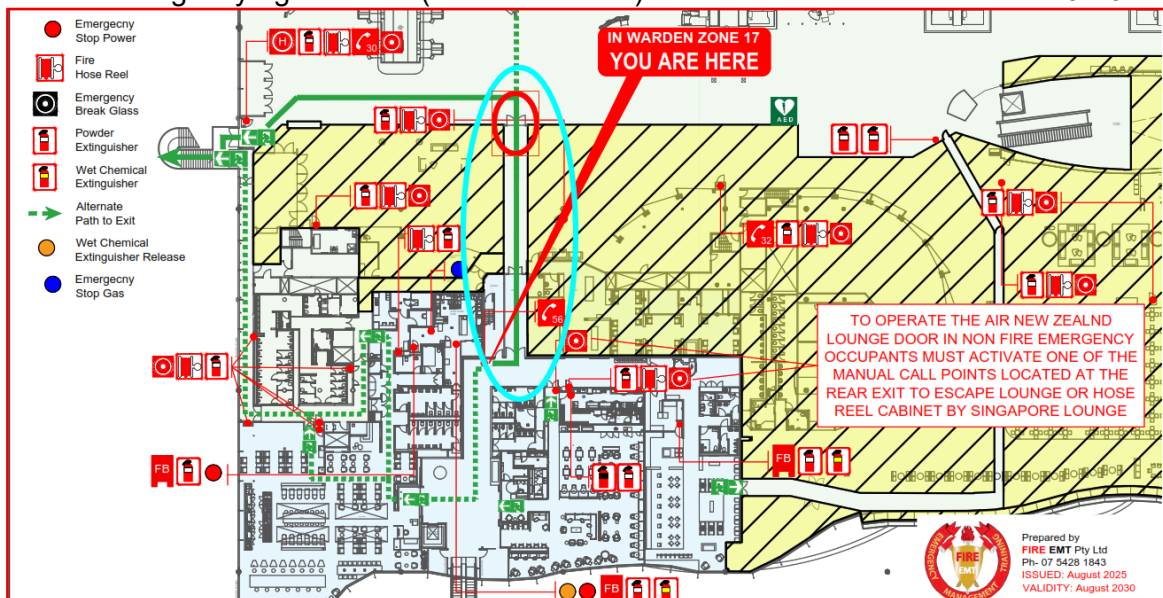
1. The corridor contains three smoke doors (shown in the red circles below) that are held open by magnetic locks. During a fire alarm these doors will release and close, they will not lock and can be opened for emergency egress. The doors must not be blocked at any time to ensure they can freely close on fire alarm.
2. The corridor is not to be used for storage of any items as it is a main emergency egress route for the southern lounges and toilets. Wardens and staff, particularly cleaning staff are to monitor the above during daily use to ensure it is kept clear.



- During an emergency, evacuees in the southern corridor will have a secondary egress route option, if the route is compromised **during a fire alarm evacuation only**. The secondary route will allow evacuees to evacuate back into the Air NZ lounge via two entry points marked below in red circles. They can then proceed back through the main Air NZ entry door and egress via one of two egresses (WIP 56 exit or the Singapore Lounge exit.)



- The emergency egress route from the common corridor for the southern lounges next to WIP 56 will currently also remain available, once evacuees exit the corridor they will egress through the construction zone segregated by bike racks (blue circle area below) through a new emergency egress door (red circle below) that will exit near check in rows 9-10.



Evacuation Diagrams in all affected areas will be changed on Monday 1st September 2025. Please contact me via email with any questions regarding these changes throughout the project.

Garry Dawson (GiFireE) BAC Fire Safety Advisor
Mob: 07 5428 1843 Ext 4
Email: garry.dawson@fireemt.com.au