

# Stakeholder Notice

## Planned Controlled Burn – Adjacent to Western Runway

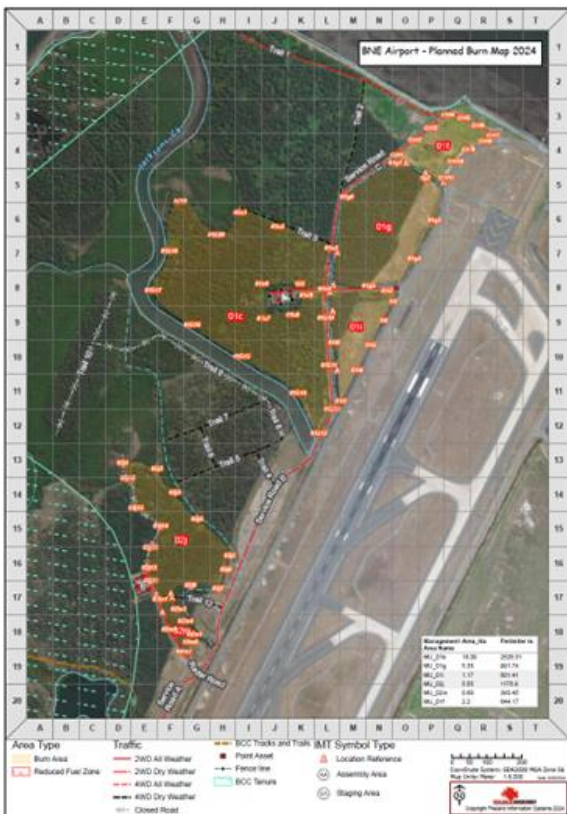
Date 11 September 2025



A planned, controlled burn is required this Saturday and Sunday, 13-14 September, to manage emerging weed issues and reduce overall fire risk to the area adjacent to the western runway (Runway 01L/19R). This activity requires very specific weather conditions and requires the closure of the western runway during the burn.

### Location

West of the western runway (Runway 01L/19R)



### Scope of Works

Fireland will conduct an 8-hour controlled burn including containment on 13 – 14 September.

Due to the close proximity of the controlled burn to the western runway, this runway will be closed during the activity and all aircraft movements will be conducted on the eastern runway.

Infrastructure Closure	Day	Closure Time	Reopening Time
RWY 01L/19R (west)	Saturday	0000UTC (1000 local)	1200UTC (2200 local)
RWY 01L/19R (west)	Sunday	2300UTC (0900 local)	0600UTC (1600 local)
RWY 01L/19R (west)	Possibly overnight	1200UTC (2200 local)	1900 UTC (0500 local)

## Impacts

### Smoke visible in vicinity of runway / airport

Due to the controlled burn, smoke will be visible in the vicinity of Brisbane Airport by airport workers, businesses, passengers, road users and neighbouring communities. Brisbane Airport wants to assure everyone that this is a controlled burn, planned and under constant supervision.

### Smoke affecting air quality

Residents and businesses to the west of the western runway including Nudgee Beach, Nudgee, Northgate and Banyo may experience smoke during the controlled burn.

### Western Runway Closure

During the controlled burn the western runway will be closed and all aircraft movements will use the eastern runway during the weekend.

### Bridge to Brisbane event on Sunday 14 September

Smoke is not forecast to impact the Gateway Bridge or race route during the Bridge to Brisbane event; in fact, the forecast winds should carry it away from this area.

## Project Contact

### BAC Project Manager:

Jack Vosten

Email: [jack.vosten@bne.com.au](mailto:jack.vosten@bne.com.au)

**Airport Duty Manager contactable 24/7, 07 3406 3171**