



FIRE EMT

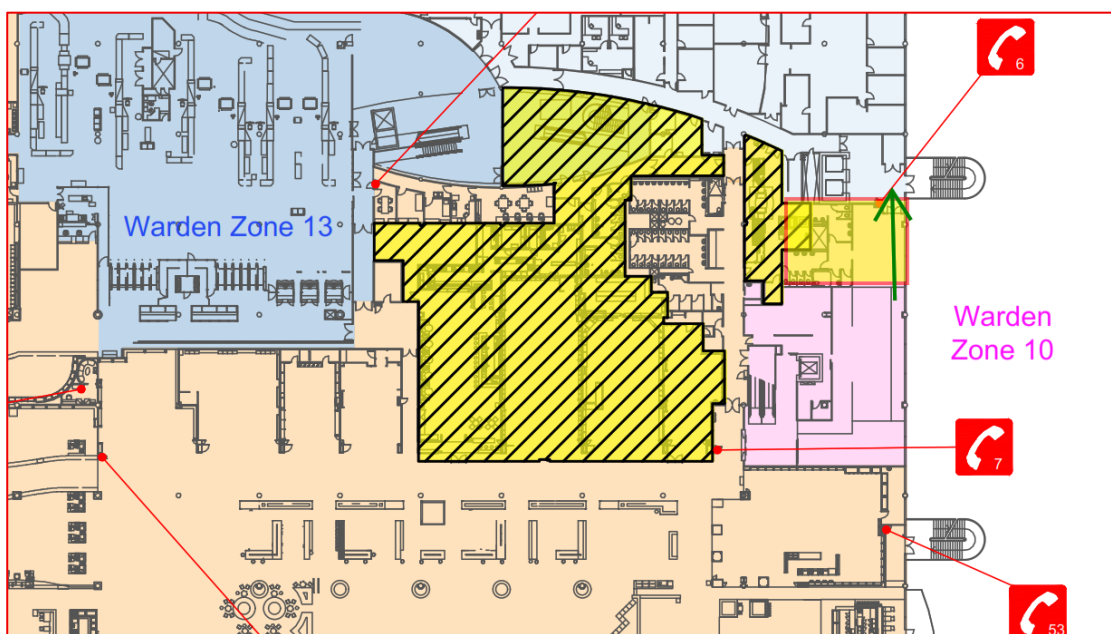
Emergency Management Training



SAFETY NOTICE 13

**INTERNATIONAL TERMINAL SECURITY RETAIL UPGRADE PROJECT
(ITB SRUP)**

The following essential information is to be passed to Qantas Lounge and Chief/Deputy Chief Wardens who must make themselves aware of these special emergency egress route procedures and impediment to WIP 6 as shown below.



This change has the following effect on emergency egress in the Level 3 Qantas Lounge.

The existing emergency egress from the L3 lounge area to the L3 lift lobby has construction activity for approximately one month. Hoarding has been erected at the western end of the lounge as indicated by the red boxed area above. Emergency egress is still available via the new emergency doors in the hoarding allowing passage through the construction area; these doors will release on fire alarm and has an emergency door release available for non-fire emergencies.

WIP 6 in the Lounge will only be accessible by exiting into the construction zone, Wardens in the L3 Lounge can also utilize WIP 7 located by the drink fountain outside the lounge in the common user corridor.

All staff and wardens in this area are to familiarise themselves with the changes.

Evacuation Diagrams in all affected areas will not be changed to reflect these changes for this short period.

Please contact me via email with any questions regarding these changes throughout the project.

Garry Dawson (GiFireE) BAC Fire Safety Advisor

Mob: 07 5428 1843 Ext 4

Email: garry.dawson@fireemt.com.au