

# Stakeholder Notice

## DB.2 Upgrades

STK-N Rev12  
Date 22 October 2025



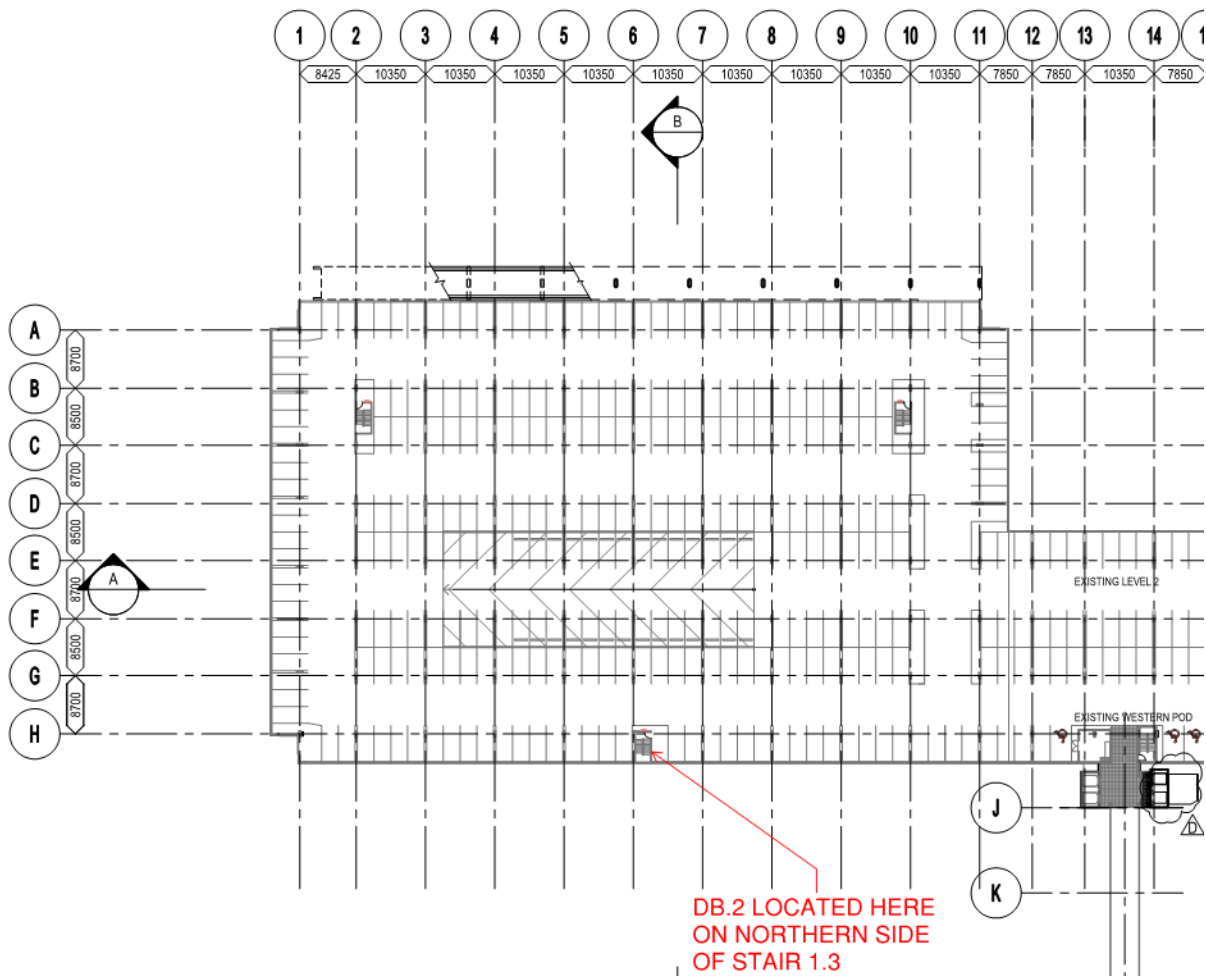
### BNE – Stakeholder Notice Summary

Brisbane Airport Corporation (BAC) is required to undertake Distribution Board upgrade works on the terminal's low voltage system of DB.2 to ensure electrical supply expansion, continuity & safety of the Domestic Terminal Building electrical supply system.

## Location

DB.2 is located in Zone 1 Level 2 of the P2 multistorey public carpark.

DB 12 is located in Zone 1 Level 4 of the P2 multistorey public carpark directly above DB.2.



## Scope of Works

**Date: Tuesday 28 October 2025.**

**Time: 00:30am to 03:30am**

Investigation works and removal of redundant components and cabling in DB.2 to confirm the scope of works for the required upgrades to DB.2 and to correctly identify all wiring and circuits affected by upcoming upgrade works.

Once the required isolations indicated in the 'Impacts' section below are undertaken and DB.2 is made safe for access, the following steps will be carried out:

- Confirm and remove any redundant components and cabling.
- Verify all control wiring.
- Confirm dual supplies and locations of isolation in preparation for replacement.
- Temporarily Re-Supply DB12 from Temp Board minimise impacts during cutover works.

**Date: Wednesday 29 October 2025.**

**Time: 9:00am to 5:00pm**

Remove existing board and replace with new DB2. Resupply DB12 from DB2. Complete commissioning of DB2.

**Date: Thursday 30 October 2025.**

**Time: 9:00am to 12:00pm**

If works not completed on Wednesday, complete commissioning of DB2.

## Program / Impacts / Mitigations

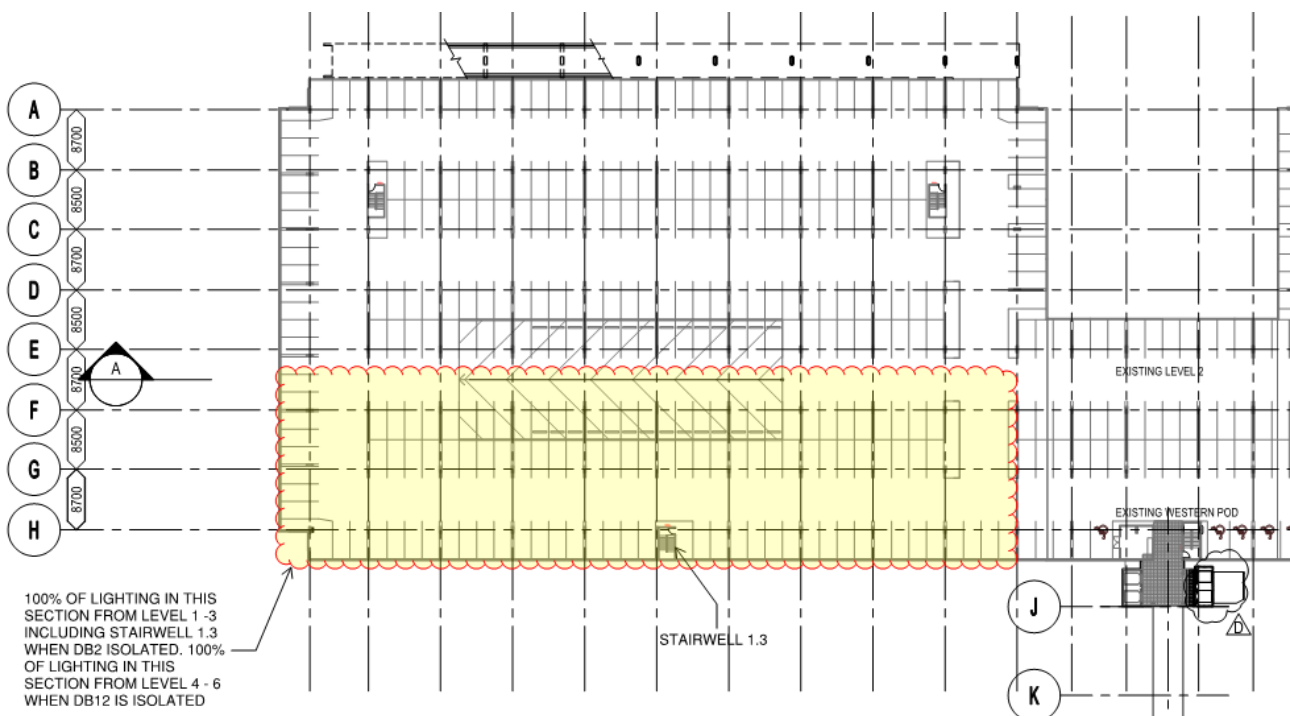
| ISOLATION                             | DAY                     | TIME   | MAIN IMPACTS<br>(Refer below for full details)                     | MITIGATIONS   |
|---------------------------------------|-------------------------|--|--|---|
| DB2 & DB12                            | TUESDAY<br>28/10/2025   | 0030 - 0330  | Lighting in approx. 25% of P2 as per plan below.<br>All levels.    | Temp lights at level 1 and level 3 lift foyers and on the top of the ramps at the southern end.<br>Additional carpark staff |
| CB-30 LIGHTING CONTROL CIRCUIT AT DB4 | TUESDAY<br>28/10/2025   | 0030 - 0130  | Lighting in 100% of P2 on all levels.                              | Additional carpark staff  |
| DB2                                   | WEDNESDAY<br>29/10/2025 | 0900 - 1700  | Lighting in approx. 25% of P2 as per plan below.<br>Levels 1 to 3  | Temp lights on ramp on level 1 – 3 in affected area   |
| DB12                                  | WEDNESDAY<br>29/10/2025 | 1600 -1700 possibly earlier if switchboard install concludes earlier | Lighting in approx. 25% of P2 as per plan below.<br>Levels 4 to 6. | Temp lights on ramp on level 4 – 6 in affected area   |
| DB2 and DB12                          | THURSDAY<br>30/10/25    | 0900 – 1200 if required  | Lighting in approx. 25% of P2 as per plan below.<br>All levels.    | Temp lights on ramp for level 1 – 6 in affected area  |

Services affected by shutting down DB.2 are as follows: -

- Carpark Lighting for the area of the P2 carpark shown in the plan below, for all Levels 1 to 3.
- GPO adjacent to DB.2
- Stairwell lighting in Stair 1.3 as marked on the plan below.

Services affected by shutting down DB12 are as follows: -

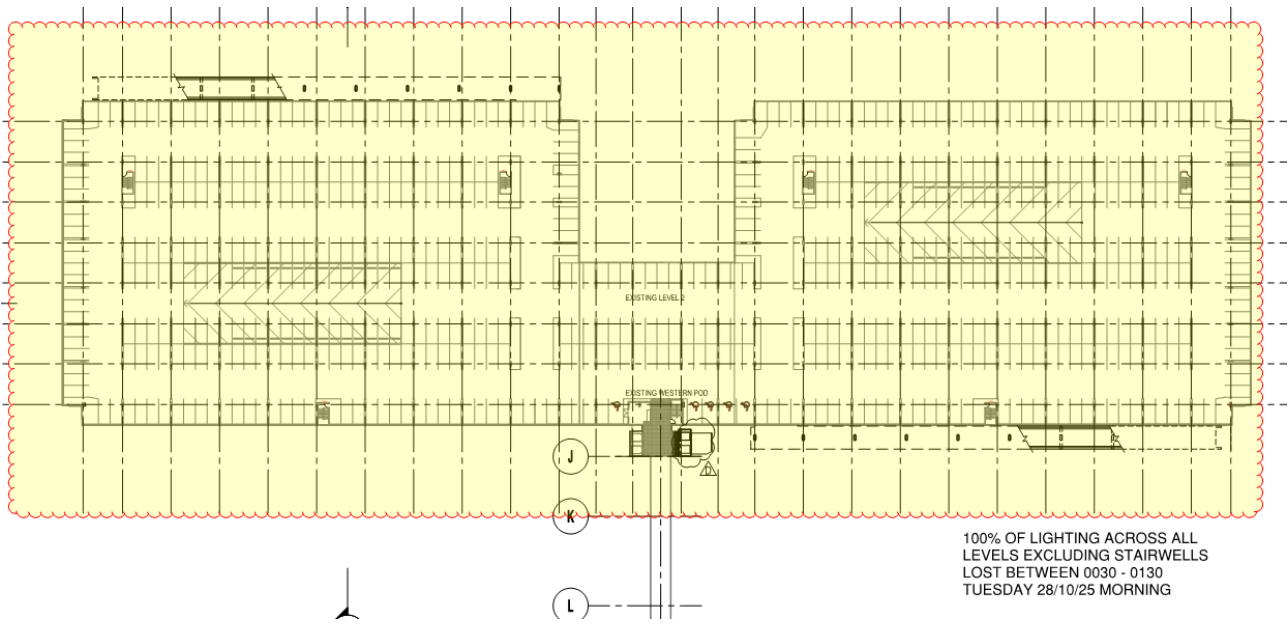
- Carpark Lighting for the area of the P2 carpark shown in the plan below, for all Levels 4 to 6.
- GPO adjacent to DB.2
- Stairwell lighting in Stair 1.3 as marked on the plan below.



Services affected by isolating CB30 – Lighting Control Circuit at DB4 are as follows (1 hours): -

- 100% of the following lighting over the whole of the P2 carpark as per the plan below
  - Emergency Lighting Global Test across carpark
  - Walkway and Links Lights across carpark
  - Carpark Perimeter Lights across carpark
  - Carpark Driveway & Centre Lights across carpark

Stairwell lighting will remain unaffected during this this time with the exception of stairwell 1.3



## Mitigations

During the Tuesday morning shutdown battery powered temporary lights will be provided at level 1 and level 3 lift foyers and on the top of the ramps at the southern end. Additional carpark staff will also be provided on Level 1 and Level 3 to escort customers to and from their cars.

On the Wednesday (and Thursday if this is required) battery powered temporary lights will be provided on the ramp on levels 1 – 3 in the area affected by DB2 and levels 4 -6 in the area affected by DB12.

During the DB2 & DB12 shutdowns, approved temporary signage will be provided on the doors to Stair 1.3 on all levels

## Project Contacts

### KEY CONTACTS BAC

Senior PM / Project Lead  
Craig Mapperson  
0407 544 161  
craig.mapperson@bne.com.au

**Airport Duty Manager contactable 24/7**  
**07 3406 3171**

## KEY CONTACTS INTREC

Project Manager  
Josh Southwell  
0422 769 164  
[Josh.Southwell@intrec.com.au](mailto:Josh.Southwell@intrec.com.au)

Project Engineer  
Taylor French  
0411 202 229  
[Taylor.french@intrec.com.au](mailto:Taylor.french@intrec.com.au)

Site Manager  
Tim Hendry  
0434 421 926  
[Tim.Hendry@intrec.com.au](mailto:Tim.Hendry@intrec.com.au)

## KEY CONTACTS FREDON

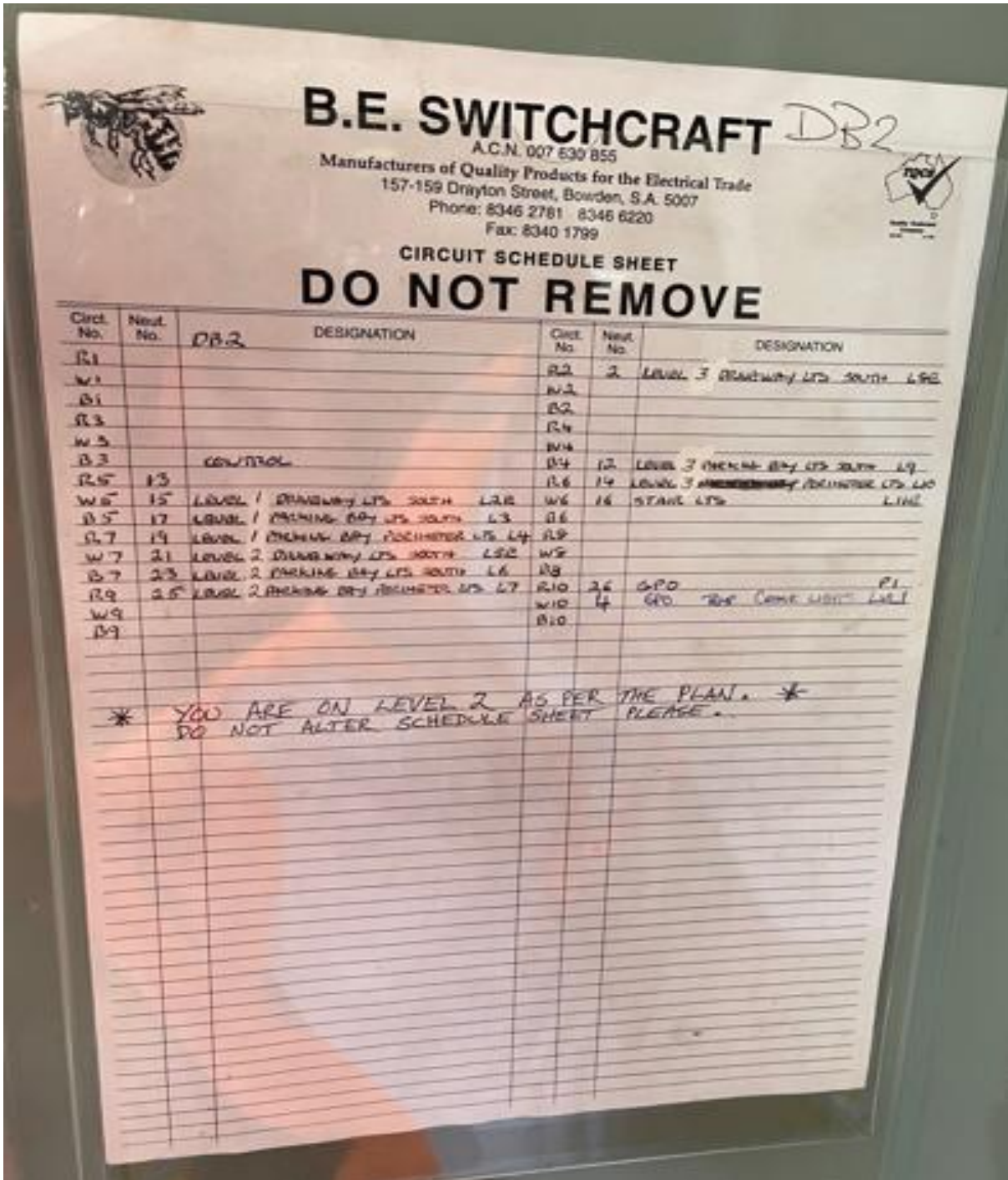
Sam O'Brien • Project Manager • Technical Services/QLD  
0400 199 372  
[sobrien@fredon.com.au](mailto:sobrien@fredon.com.au)

Patrick Doyle • Supervisor • Technical Services/QLD  
0409 388 676  
[pdoyle@fredon.com.au](mailto:pdoyle@fredon.com.au)

# Technical Supporting Information

Refer to Appendix for further technical supporting information.

## Appendix 1.





**NILSEN ELECTRIC QLD**

Unit 2, 53 Southgate Ave, Cannon Hill QLD 4170. Tel (07) 3619 8866

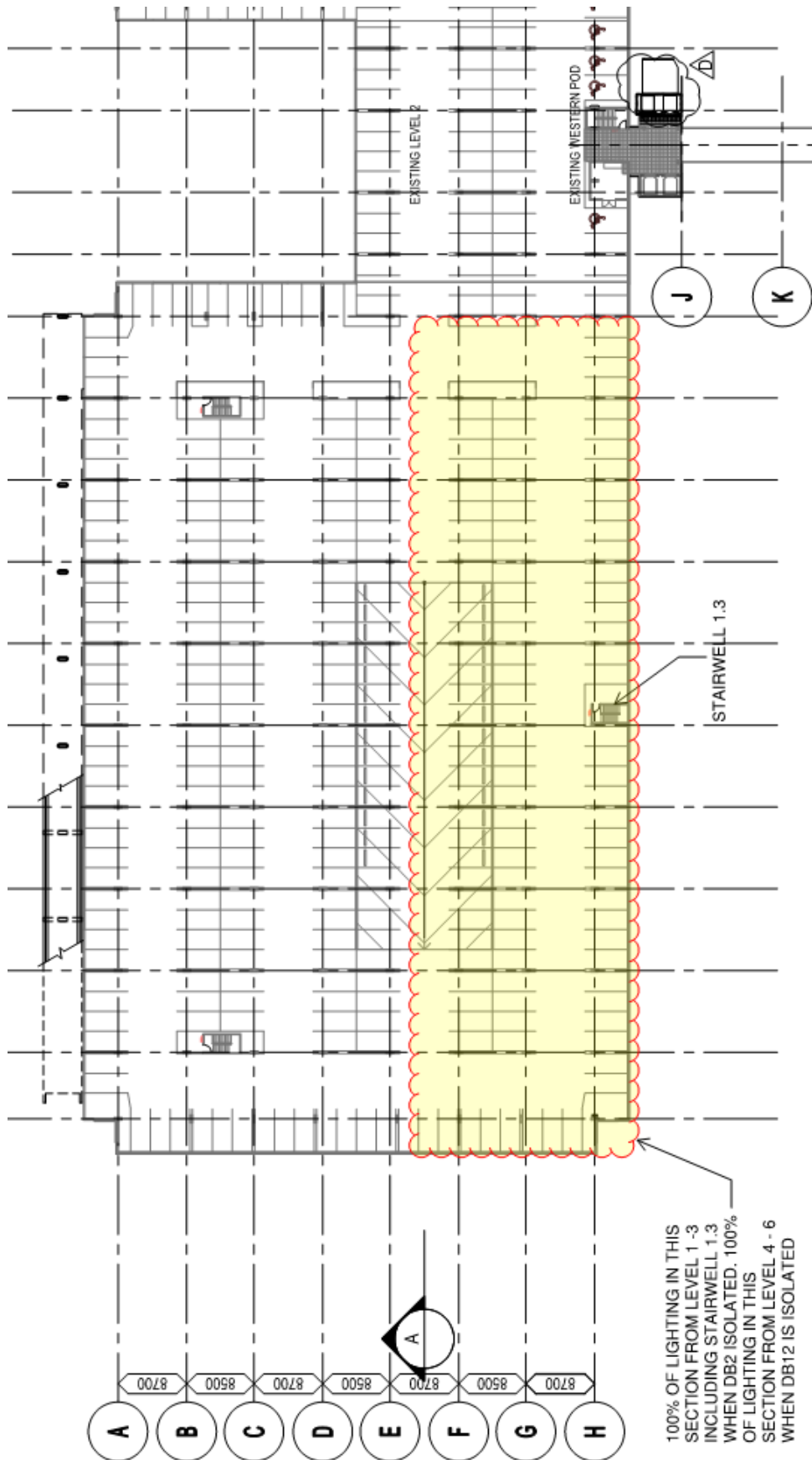
*DBR*

|               |                           |
|---------------|---------------------------|
| CONTRACT      | C9304 BACL                |
| DB. REF       | DISTRIBUTION BOARD No. 12 |
| DB LOCATION   | LEVEL 4 ADJ SE STAIRS     |
| SUPPLIED FROM | MSB                       |
| SUPPLIES      | LEVEL 3, 4, 5 CARPARK     |

|               |   |         |        |
|---------------|---|---------|--------|
| No. OF PHASES | 3 | VOLTAGE | 415VAC |
|---------------|---|---------|--------|

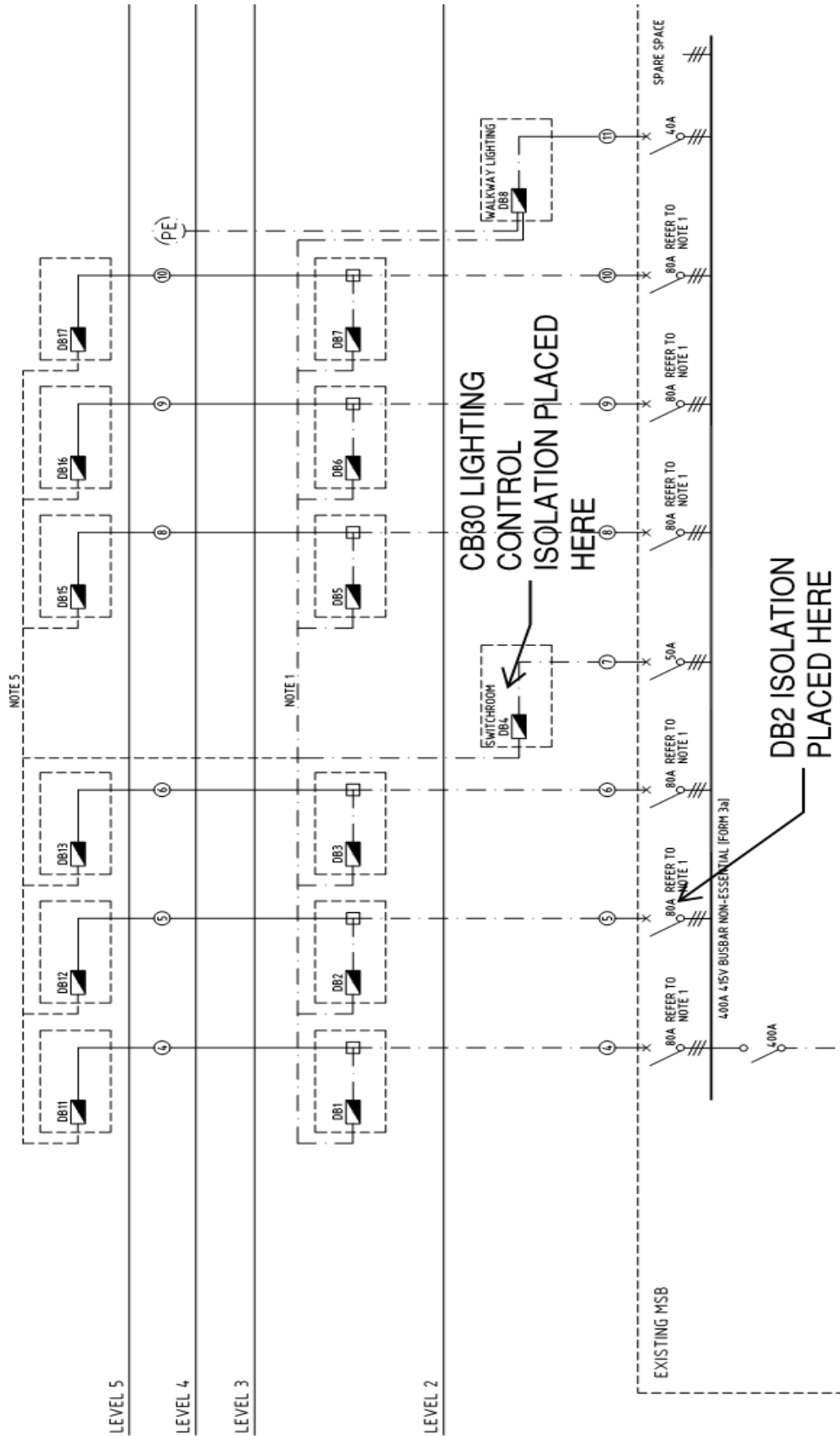
| C/B No. | CIRCUIT DESIGNATION                            | LOCATION                                     | N/L No. |
|---------|--|--|---------|
| 1       | GENERAL PURPOSE OUTLET                         | ADJ DIST. BOARD                              | 1       |
| 2       | L1 PERIMETER LIGHTS                            | LEVEL 3 <sup>4</sup>                         | 2       |
| 3       | <del>Demountable L4 3</del> <sup>WATER</sup>   |  | 3       |
| 4       | L2 DRIVEWAY LIGHTS                             | LEVEL 3 <sup>4</sup>                         | 4       |
| 5       | <del>Demountable L4 3</del> <sup>Carport</sup> | LEVEL 3 <sup>Carport</sup>                   | 5       |
| 6       | L3 PARKING BAY LIGHTS                          | LEVEL 3 <sup>4</sup>                         | 6       |
| 7       |  |  | 7       |
| 8       | L4 PERIMETER LIGHTS                            | LEVEL 4 <sup>5</sup>                         | 8       |
| 9       |  |  | 9       |
| 10      | L5 DRIVEWAY LIGHTS                             | LEVEL 4 <sup>5</sup>                         | 10      |
| 11      |  |  | 11      |
| 12      | L6 PARKING BAY LIGHTS                          | LEVEL 4 <sup>5</sup> <sup>L6 PERIMETER</sup> | 12      |
| 13      | <del>L6 DRIVEWAY LIGHTS</del>                  | L6   | 13      |
| 14      | L7 PERIMETER LIGHTS                            | LEVEL 5 <sup>6</sup> <sup>L7 PERIMETER</sup> | 14      |
| 15      | L8 DRIVEWAY LIGHTS                             | LEVEL 5 <sup>6</sup>                         | 15      |
| 16      | L8 DRIVEWAY LIGHTS                             | LEVEL 5 <sup>6</sup>                         | 16      |
| 17      | LIGHTING CONTROL CIRCUIT                       |  | 17      |
| 18      | L9 PARKING BAY LIGHTS                          | LEVEL 5 <sup>6</sup>                         | 18      |

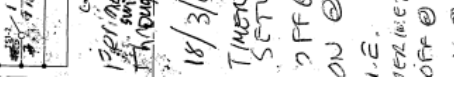
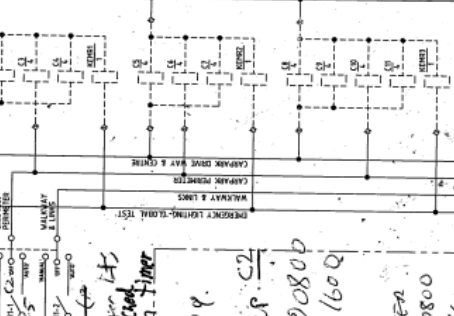
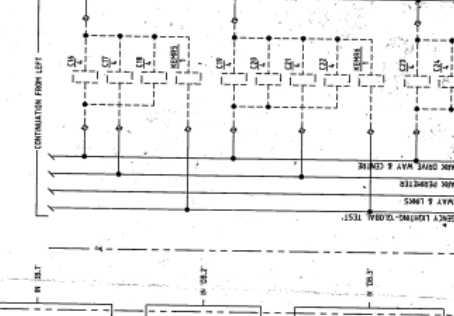
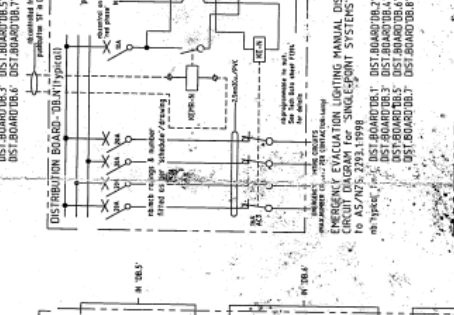
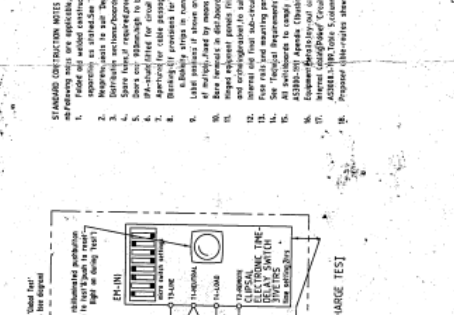
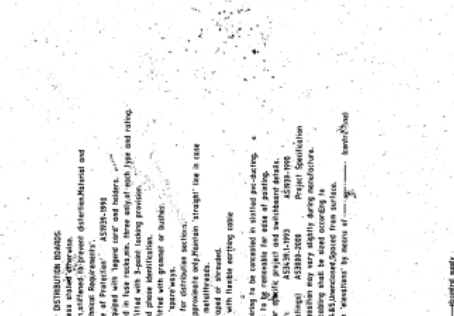
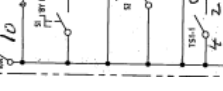
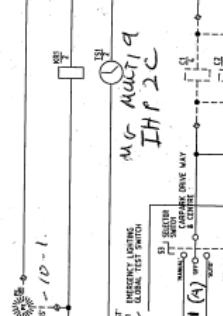
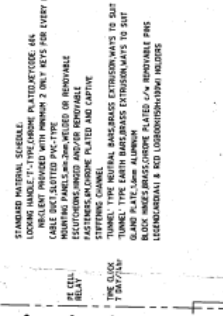
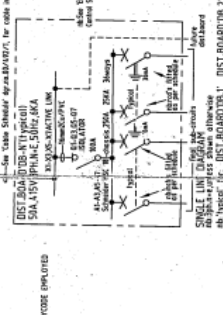
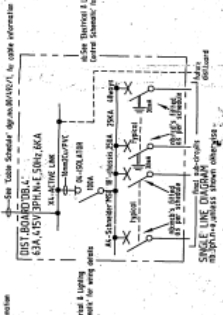
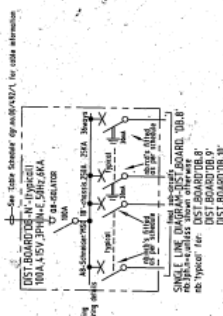
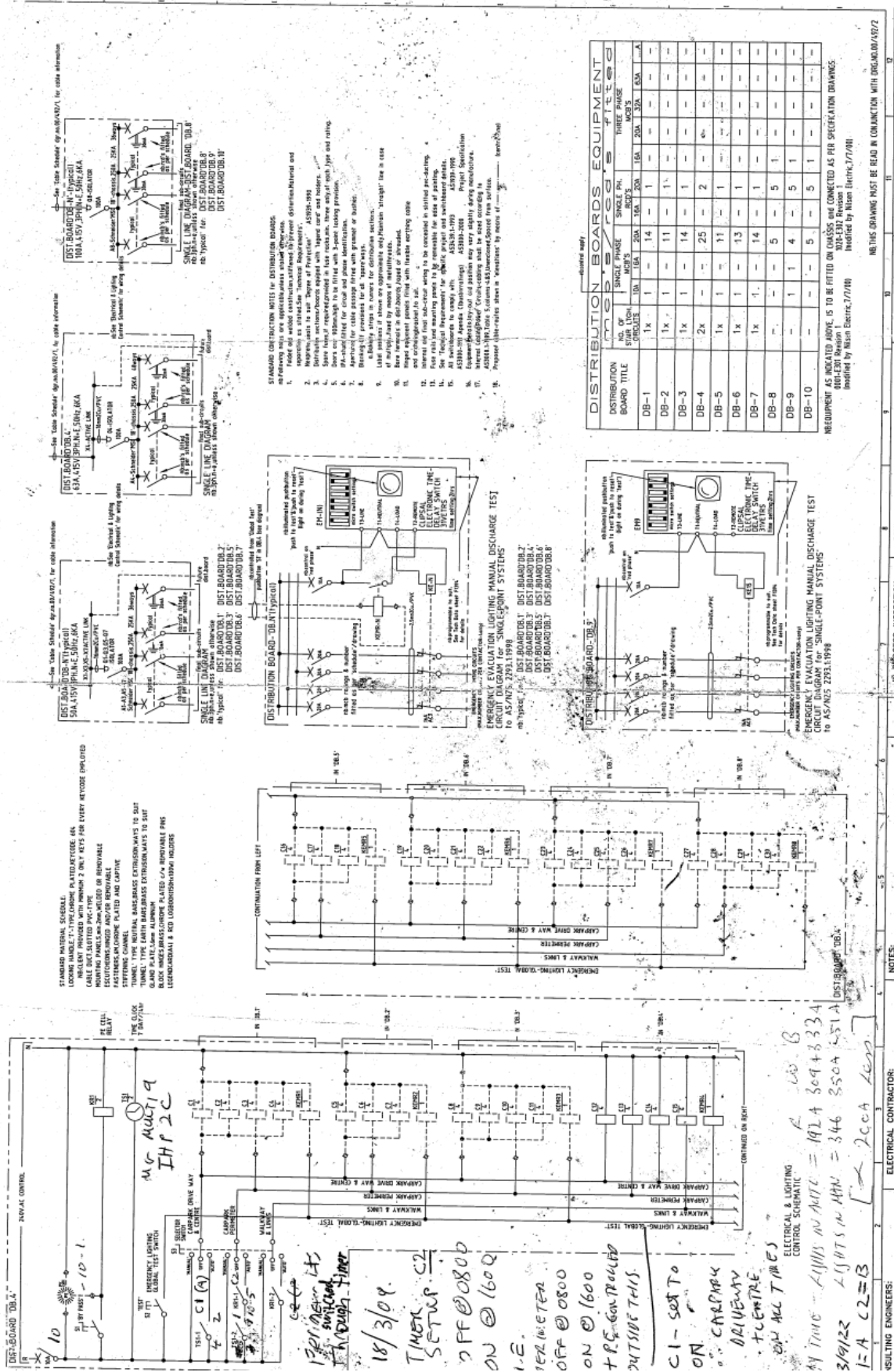
## Appendix 2





### Appendix 3.





| DISTRIBUTION BOARD TITLE | NO. OF CIRCUIT BREAKERS | SINGLE PHASE |     |     | THREE PHASE |     |     |
|--------------------------|-------------------------|--------------|-----|-----|-------------|-----|-----|
|                          |                         | 10A          | 20A | 15A | 10A         | 20A | 15A |
| DB-1                     | 1x                      | 1            | 14  | 1   | 1           | 1   | 1   |
| DB-2                     | 1x                      | 1            | 11  | 1   | 1           | 1   | 1   |
| DB-3                     | 1x                      | 1            | 14  | 1   | 1           | 1   | 1   |
| DB-4                     | 2x                      | 1            | 25  | 2   | 1           | 1   | 1   |
| DB-5                     | 1x                      | 1            | 11  | 1   | 1           | 1   | 1   |
| DB-6                     | 1x                      | 1            | 13  | 1   | 1           | 1   | 1   |
| DB-7                     | 1x                      | 1            | 14  | 1   | 1           | 1   | 1   |
| DB-8                     | 1x                      | 1            | 5   | 1   | 1           | 1   | 1   |
| DB-9                     | 1x                      | 1            | 4   | 1   | 1           | 1   | 1   |
| DB-10                    | 1x                      | 1            | 5   | 1   | 1           | 1   | 1   |

STANDARD CONSTRUCTION NOTES FOR DISTRIBUTION BOARDS:  
 1. All drawings must be in accordance with the relevant Australian Standards and specifications.  
 2. All drawings must be in accordance with the relevant Australian Standards and specifications.  
 3. All drawings must be in accordance with the relevant Australian Standards and specifications.  
 4. All drawings must be in accordance with the relevant Australian Standards and specifications.  
 5. All drawings must be in accordance with the relevant Australian Standards and specifications.  
 6. All drawings must be in accordance with the relevant Australian Standards and specifications.  
 7. All drawings must be in accordance with the relevant Australian Standards and specifications.  
 8. All drawings must be in accordance with the relevant Australian Standards and specifications.  
 9. All drawings must be in accordance with the relevant Australian Standards and specifications.  
 10. All drawings must be in accordance with the relevant Australian Standards and specifications.

EMERGENCY LIGHTING MANUAL DISCHARGE TEST  
 TO AS/NZS 2931.1:1998  
 DIST. BOARD DB1  
 DIST. BOARD DB2  
 DIST. BOARD DB3  
 DIST. BOARD DB4  
 DIST. BOARD DB5  
 DIST. BOARD DB6  
 DIST. BOARD DB7  
 DIST. BOARD DB8  
 DIST. BOARD DB9  
 DIST. BOARD DB10  
 DIST. BOARD DB11  
 DIST. BOARD DB12

EMERGENCY LIGHTING MANUAL DISCHARGE TEST  
 TO AS/NZS 2931.1:1998  
 DIST. BOARD DB1  
 DIST. BOARD DB2  
 DIST. BOARD DB3  
 DIST. BOARD DB4  
 DIST. BOARD DB5  
 DIST. BOARD DB6  
 DIST. BOARD DB7  
 DIST. BOARD DB8  
 DIST. BOARD DB9  
 DIST. BOARD DB10  
 DIST. BOARD DB11  
 DIST. BOARD DB12

EMERGENCY LIGHTING MANUAL DISCHARGE TEST  
 TO AS/NZS 2931.1:1998  
 DIST. BOARD DB1  
 DIST. BOARD DB2  
 DIST. BOARD DB3  
 DIST. BOARD DB4  
 DIST. BOARD DB5  
 DIST. BOARD DB6  
 DIST. BOARD DB7  
 DIST. BOARD DB8  
 DIST. BOARD DB9  
 DIST. BOARD DB10  
 DIST. BOARD DB11  
 DIST. BOARD DB12

EMERGENCY LIGHTING MANUAL DISCHARGE TEST  
 TO AS/NZS 2931.1:1998  
 DIST. BOARD DB1  
 DIST. BOARD DB2  
 DIST. BOARD DB3  
 DIST. BOARD DB4  
 DIST. BOARD DB5  
 DIST. BOARD DB6  
 DIST. BOARD DB7  
 DIST. BOARD DB8  
 DIST. BOARD DB9  
 DIST. BOARD DB10  
 DIST. BOARD DB11  
 DIST. BOARD DB12

EMERGENCY LIGHTING MANUAL DISCHARGE TEST  
 TO AS/NZS 2931.1:1998  
 DIST. BOARD DB1  
 DIST. BOARD DB2  
 DIST. BOARD DB3  
 DIST. BOARD DB4  
 DIST. BOARD DB5  
 DIST. BOARD DB6  
 DIST. BOARD DB7  
 DIST. BOARD DB8  
 DIST. BOARD DB9  
 DIST. BOARD DB10  
 DIST. BOARD DB11  
 DIST. BOARD DB12

EMERGENCY LIGHTING MANUAL DISCHARGE TEST  
 TO AS/NZS 2931.1:1998  
 DIST. BOARD DB1  
 DIST. BOARD DB2  
 DIST. BOARD DB3  
 DIST. BOARD DB4  
 DIST. BOARD DB5  
 DIST. BOARD DB6  
 DIST. BOARD DB7  
 DIST. BOARD DB8  
 DIST. BOARD DB9  
 DIST. BOARD DB10  
 DIST. BOARD DB11  
 DIST. BOARD DB12

EMERGENCY LIGHTING MANUAL DISCHARGE TEST  
 TO AS/NZS 2931.1:1998  
 DIST. BOARD DB1  
 DIST. BOARD DB2  
 DIST. BOARD DB3  
 DIST. BOARD DB4  
 DIST. BOARD DB5  
 DIST. BOARD DB6  
 DIST. BOARD DB7  
 DIST. BOARD DB8  
 DIST. BOARD DB9  
 DIST. BOARD DB10  
 DIST. BOARD DB11  
 DIST. BOARD DB12

EMERGENCY LIGHTING MANUAL DISCHARGE TEST  
 TO AS/NZS 2931.1:1998  
 DIST. BOARD DB1  
 DIST. BOARD DB2  
 DIST. BOARD DB3  
 DIST. BOARD DB4  
 DIST. BOARD DB5  
 DIST. BOARD DB6  
 DIST. BOARD DB7  
 DIST. BOARD DB8  
 DIST. BOARD DB9  
 DIST. BOARD DB10  
 DIST. BOARD DB11  
 DIST. BOARD DB12

EMERGENCY LIGHTING MANUAL DISCHARGE TEST  
 TO AS/NZS 2931.1:1998  
 DIST. BOARD DB1  
 DIST. BOARD DB2  
 DIST. BOARD DB3  
 DIST. BOARD DB4  
 DIST. BOARD DB5  
 DIST. BOARD DB6  
 DIST. BOARD DB7  
 DIST. BOARD DB8  
 DIST. BOARD DB9  
 DIST. BOARD DB10  
 DIST. BOARD DB11  
 DIST. BOARD DB12

REQUIREMENT AS INDICATED ABOVE IS TO BE FITTED ON CHASSIS AND CONNECTED AS PER SPECIFICATION DRAWINGS.  
 DRAWING NO. 00/L92  
 DATE 18/03/04  
 DRAWN BY [Signature]  
 CHECKED BY [Signature]  
 PROJECT: LONG TERM CARPARK  
 BRISBANE AIRPORT  
 REVISIONS MUST BE MADE IN CONJUNCTION WITH DRAWING 00/L92/7

REVISIONS MUST BE MADE IN CONJUNCTION WITH DRAWING 00/L92/7

REVISIONS MUST BE MADE IN CONJUNCTION WITH DRAWING 00/L92/7

REVISIONS MUST BE MADE IN CONJUNCTION WITH DRAWING 00/L92/7

REVISIONS MUST BE MADE IN CONJUNCTION WITH DRAWING 00/L92/7

REVISIONS MUST BE MADE IN CONJUNCTION WITH DRAWING 00/L92/7

REVISIONS MUST BE MADE IN CONJUNCTION WITH DRAWING 00/L92/7

REVISIONS MUST BE MADE IN CONJUNCTION WITH DRAWING 00/L92/7

REVISIONS MUST BE MADE IN CONJUNCTION WITH DRAWING 00/L92/7

REVISIONS MUST BE MADE IN CONJUNCTION WITH DRAWING 00/L92/7

| NO. | DATE     | ISSUE | DESCRIPTION   |
|-----|----------|-------|---------------|
| 1   | 18/03/04 | A     | Initial Issue |
| 2   | 18/03/04 | B     | Revised       |
| 3   | 18/03/04 | C     | Revised       |
| 4   | 18/03/04 | D     | Revised       |

PROJECT: LONG TERM CARPARK  
 BRISBANE AIRPORT  
 DRAWING NO. 00/L92  
 DATE 18/03/04  
 DRAWN BY [Signature]  
 CHECKED BY [Signature]

PROJECT: LONG TERM CARPARK  
 BRISBANE AIRPORT  
 DRAWING NO. 00/L92  
 DATE 18/03/04  
 DRAWN BY [Signature]  
 CHECKED BY [Signature]

PROJECT: LONG TERM CARPARK  
 BRISBANE AIRPORT  
 DRAWING NO. 00/L92  
 DATE 18/03/04  
 DRAWN BY [Signature]  
 CHECKED BY [Signature]

PROJECT: LONG TERM CARPARK  
 BRISBANE AIRPORT  
 DRAWING NO. 00/L92  
 DATE 18/03/04  
 DRAWN BY [Signature]  
 CHECKED BY [Signature]

PROJECT: LONG TERM CARPARK  
 BRISBANE AIRPORT  
 DRAWING NO. 00/L92  
 DATE 18/03/04  
 DRAWN BY [Signature]  
 CHECKED BY [Signature]

PROJECT: LONG TERM CARPARK  
 BRISBANE AIRPORT  
 DRAWING NO. 00/L92  
 DATE 18/03/04  
 DRAWN BY [Signature]  
 CHECKED BY [Signature]

PROJECT: LONG TERM CARPARK  
 BRISBANE AIRPORT  
 DRAWING NO. 00/L92  
 DATE 18/03/04  
 DRAWN BY [Signature]  
 CHECKED BY [Signature]

PROJECT: LONG TERM CARPARK  
 BRISBANE AIRPORT  
 DRAWING NO. 00/L92  
 DATE 18/03/04  
 DRAWN BY [Signature]  
 CHECKED BY [Signature]

PROJECT: LONG TERM CARPARK  
 BRISBANE AIRPORT  
 DRAWING NO. 00/L92  
 DATE 18/03/04  
 DRAWN BY [Signature]  
 CHECKED BY [Signature]

PROJECT: LONG TERM CARPARK  
 BRISBANE AIRPORT  
 DRAWING NO. 00/L92  
 DATE 18/03/04  
 DRAWN BY [Signature]  
 CHECKED BY [Signature]

PROJECT: LONG TERM CARPARK  
 BRISBANE AIRPORT  
 DRAWING NO. 00/L92  
 DATE 18/03/04  
 DRAWN BY [Signature]  
 CHECKED BY [Signature]